



The Tallahassee-Leon County  
 21<sup>st</sup> Century Council  
*Quality of Life / Sustainability*  
**COMMUNITY INDICATOR**

**Quality of Life / Sustainability Segment:**  
 ECONOMIC PROGRESS PROFITS PROSPERITY  
 SOCIAL **PEOPLE**  
 ENVIRONMENTAL PLANET PLACE  
*governance ethics justice spirituality peace*  
**Title: Youth Population / School Enrollment**

**Youth Population / School Enrollment**

**Indicator:**

Leon County youth population ages 5 to 17 by race and ethnicity in the following categories: Non-Hispanic (NH) White, Non-Hispanic Black, Hispanic Origin, and Other races and ethnicities; and public school enrollment grades K-12 in comparison to youth population ages 5 to 17.

**Commentary:**

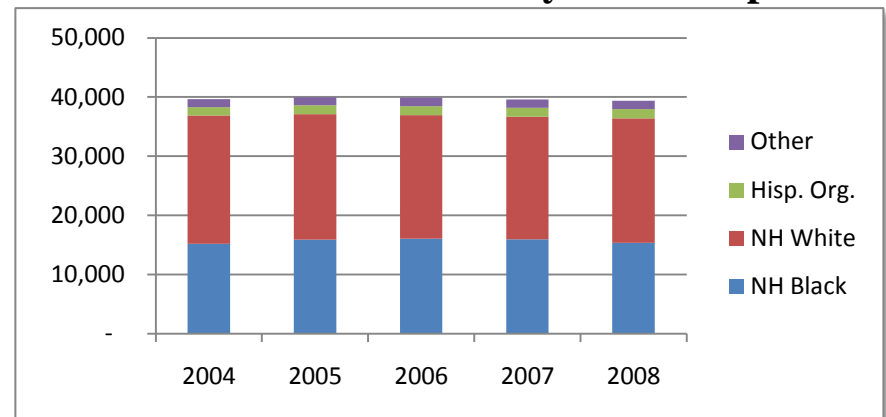
The total population of Leon County youth ages 5 to 17 has remained fairly stable near 40,000 since 2004. The demographic makeup of the youth population has also been relatively steady with slightly over 50% white, about 40% black and less than 10% Hispanic or other. Meanwhile, Leon County public school enrollment has shown slight increases. The data shows that about one in five Leon County youth are not reached by public school programs. These young people may be in private schools or home-schooled. For these students and their families, alternative intervention strategies may be needed. Also, with nearly half of the youth identifying themselves as black, Hispanic or other minorities, culturally sensitive and appropriate social marketing and communication mechanisms should be developed and utilized.

**Source(s):**

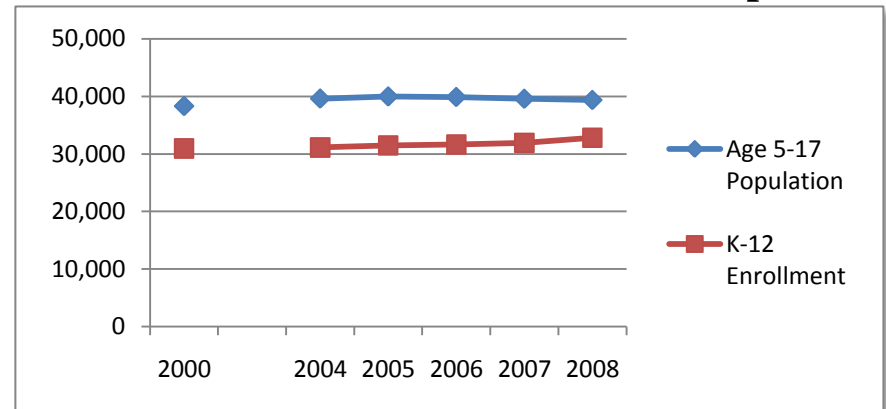
Tallahassee-Leon County Statistical Digests, Tallahassee-Leon County Planning Department (TLCPD), 2005-09, and supporting resources.  
[www.talgov.com/planning/support/stat\\_digest.cfm](http://www.talgov.com/planning/support/stat_digest.cfm)

*Note: TLCPD Statistical Digest demographic data for young adults is in the 18 to 34 year old age group.*

**Chart 1: Leon County Youth Population**



**Chart 2: Public School Enrollment / Population**





The Tallahassee-Leon County  
 21<sup>st</sup> Century Council  
*Quality of Life / Sustainability*  
**COMMUNITY INDICATOR**

**Quality of Life / Sustainability Segment:**  
 ECONOMIC PROGRESS PROFITS PROSPERITY  
 SOCIAL **PEOPLE**  
 ENVIRONMENTAL PLANET PLACE  
*governance ethics justice spirituality peace*  
**Title: Higher Education Enrollment**

**Higher Education Enrollment**

**Indicator:**

Reported Leon County fall enrollment at area institutions of higher learning: Florida State University, Florida A&M University, and Tallahassee Community College (CC).

**Commentary:**

Enrollment at Leon County area institutions of higher learning has increased steadily since 1970 when the total enrollment for all three institutions was 23,788. Enrollment continued a rapid climb, adding over 34,000 students between 1970 and 2000, while total enrollment at the three institutions more than doubled between 1985 and 2009. This large population of over 65,000 college age students in Tallahassee-Leon County may be the contributing rationale for campus-area entertainment, alcohol, tobacco and smokeless tobacco outlets. This entertainment and leisure culture can lead to peripheral illegal drug use activities, and can frequently involve underage college and younger school students.

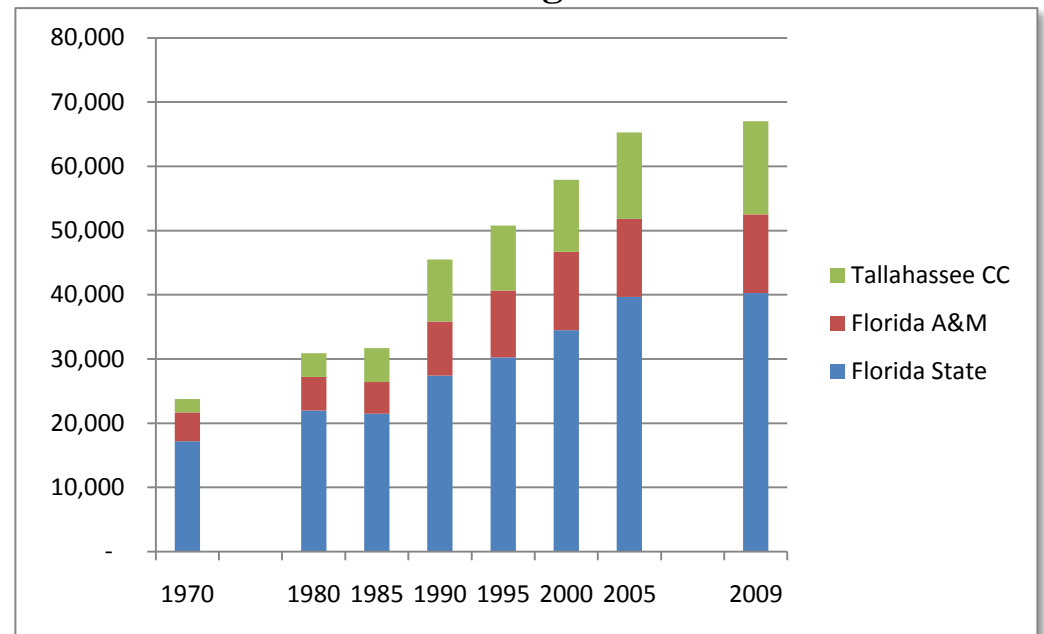
**Source(s):**

Tallahassee-Leon County Statistical Digests, Tallahassee-Leon County Planning Department (TLCPD), 2005-10.

[www.talgov.com/planning/support/stat\\_digest.cfm](http://www.talgov.com/planning/support/stat_digest.cfm)

*Note: TLCPD Statistical Digest notes source as Florida Department of Education Student Database Reports. Headcount may differ from Full-Time Equivalent (FTE) enrollment.*

**Chart 1: Higher Education Enrollment**



**Table 1: Higher Education Enrollment**

	1970	1980	1985	1990	1995	2000	2005	2009
Florida State	17,188	21,965	21,474	27,427	30,268	34,500	39,652	40,255
Florida A&M	4,500	5,246	4,919	8,411	10,395	12,202	12,177	12,261
Tallahassee CC	2,100	3,663	5,289	9,679	10,101	11,207	13,439	14,497
<b>total</b>	<b>23,788</b>	<b>30,874</b>	<b>31,682</b>	<b>45,517</b>	<b>50,764</b>	<b>57,909</b>	<b>65,268</b>	<b>67,013</b>