



The Tallahassee-Leon County  
 21<sup>st</sup> Century Council  
*Quality of Life / Sustainability*  
**COMMUNITY INDICATOR**

**Quality of Life / Sustainability Segment:**  
 ECONOMIC PROGRESS PROFITS PROSPERITY  
 SOCIAL **PEOPLE**  
 ENVIRONMENTAL PLANET PLACE  
*governance ethics justice spirituality peace*  
**Title: Youth Alcohol Consumption**

### Youth Alcohol Consumption

**Indicator:**

The percentage of Leon County middle school (MS) and high school (HS) youth reporting lifetime, past 30 day, and binge alcohol consumption.

**Commentary:**

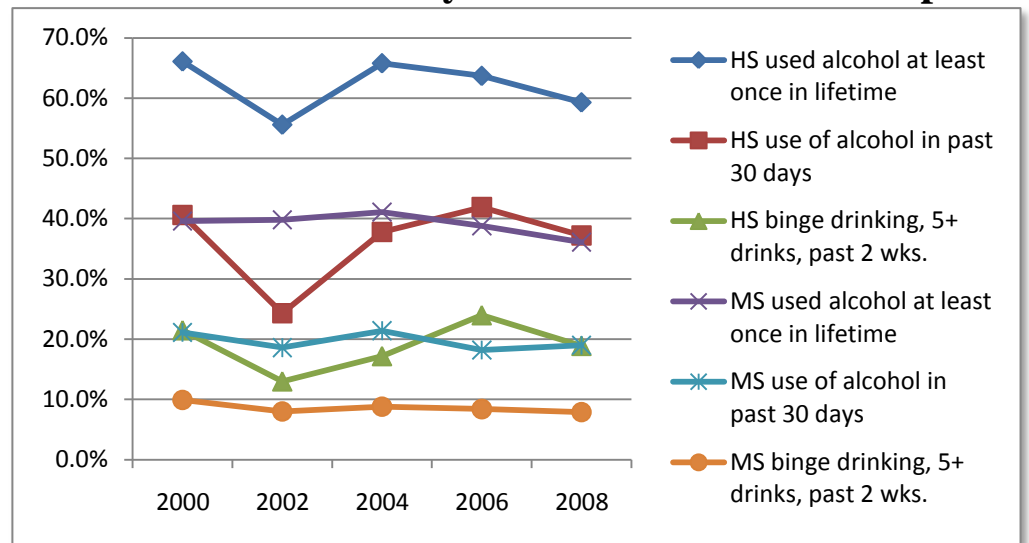
According to Florida Youth Substance Abuse Surveys (FYSAS) from 2000 to 2008, 2002 appeared to be an anomaly, possibly due to a smaller sample size (375 vs. a typical range of 1000-1400 in other years). Though the current trend seems to show a slight decline in substance abuse from 2006-08, the percentage of underage drinking remains high. Except for the '02 anomaly, overall since 2000 about one in five middle school and two in five high school students report alcohol use in the last 30 days - the latter about the same stats as middle school students reporting using alcohol at least once in their lifetime (hovering around 40%). Binge drinking, an indicator of potential significant adult alcohol problems later in life, also remains high.

**Source(s):**

Florida Youth Substance Abuse Surveys (FYSAS), even years from 2000 to 2008, Leon County Reports.  
<http://www.dcf.state.fl.us/mentalhealth/publications/fysas/>

*Note: FYSAS repeatedly notes that alcohol is the most widely used substance among both Leon County and Florida youth.*

**Chart 1: Leon County MS/HS Alcohol Consumption**



**Table 1: Leon County MS/HS Alcohol Consumption**

	2000	2002	2004	2006	2008
HS used alcohol at least once in lifetime	66.1%	55.6%	65.8%	63.7%	59.3%
HS use of alcohol in past 30 days	40.6%	24.3%	37.8%	41.9%	37.2%
HS binge drinking, 5+ drinks, past 2 wks.	21.5%	13.0%	17.2%	24.0%	18.9%
MS used alcohol at least once in lifetime	39.6%	39.8%	41.1%	38.8%	36.1%
MS use of alcohol in past 30 days	21.1%	18.6%	21.4%	18.2%	19.0%
MS binge drinking, 5+ drinks, past 2 wks.	9.9%	8.0%	8.8%	8.4%	7.9%



The Tallahassee-Leon County  
21<sup>st</sup> Century Council  
*Quality of Life / Sustainability*  
**COMMUNITY INDICATOR**

**Quality of Life / Sustainability Segment:**  
ECONOMIC PROGRESS PROFITS PROSPERITY  
SOCIAL **PEOPLE**  
ENVIRONMENTAL PLANET PLACE  
*governance ethics justice spirituality peace*  
**Title: Youth Marijuana/Hashish Use**

**Youth Marijuana/Hashish Use**

**Indicator:**

The percentage of Leon County and Florida middle school (MS) and high school (HS) youth reporting past 30 day marijuana or hashish use, and the percentage of Leon County students using marijuana or hashish on at least one occasion in their lifetime.

**Commentary:**

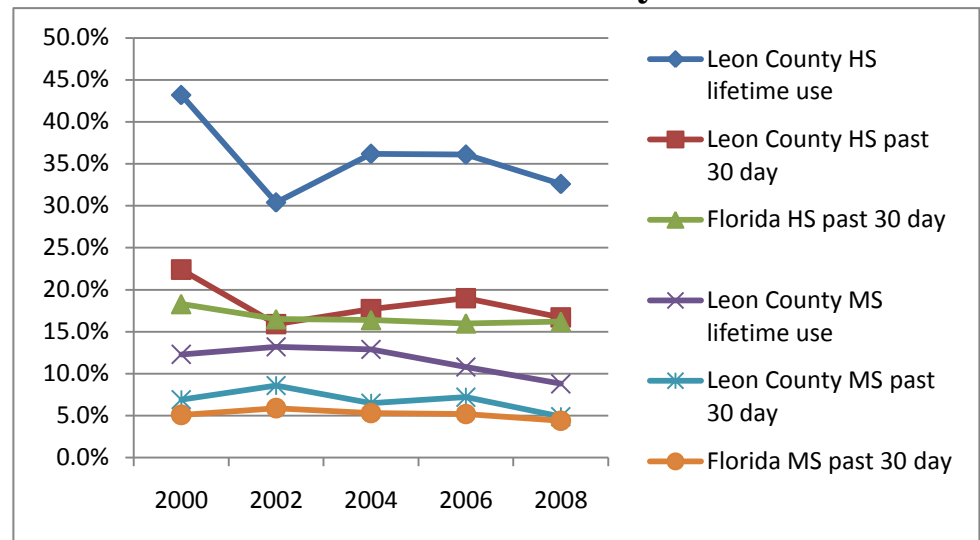
According to Florida Youth Substance Abuse Surveys (FYSAS), Leon County past 30 day use of marijuana or hashish has consistently been at or above state averages over 2000 to 2008 for both middle and high school youth. Although data indicates overall moderate declines over the same time period, it still represents one in six high school and one in twenty middle school youth using marijuana or hashish in the past 30 days. In lifetime use, about one in three Leon County high school students have tried marijuana or hashish at least once 2006-08, and about one in ten middle school youth. Also, for those who do try marijuana or hashish at least once, about half of both middle and high school youth continue to use it, at least within the past 30 days.

**Source(s):**

Florida Youth Substance Abuse Surveys (FYSAS), even years from 2000 to 2008, Leon County Reports.  
<http://www.dcf.state.fl.us/mentalhealth/publications/fyas/>

*Note: FYSAS reports lifetime marijuana or hashish use statewide for year 2000 only, no data available 2002-2008.*

**Chart 1: Past 30 Day and Lifetime Use**



**Table 1: Past 30 Day and Lifetime Use**

	2000	2002	2004	2006	2008
Leon County HS lifetime use	43.2%	30.4%	36.2%	36.1%	32.6%
Leon County HS past 30 day	22.4%	15.9%	17.7%	19.0%	16.7%
Florida HS past 30 day	18.3%	16.5%	16.4%	16.0%	16.2%
Leon County MS lifetime use	12.3%	13.2%	12.9%	10.8%	8.8%
Leon County MS past 30 day	6.9%	8.6%	6.5%	7.2%	4.9%
Florida MS past 30 day	5.1%	5.9%	5.3%	5.2%	4.4%



The Tallahassee-Leon County  
 21<sup>st</sup> Century Council  
*Quality of Life / Sustainability*  
**COMMUNITY INDICATOR**

**Quality of Life / Sustainability Segment:**  
 ECONOMIC PROGRESS PROFITS PROSPERITY  
 SOCIAL **PEOPLE**  
 ENVIRONMENTAL PLANET PLACE  
*governance ethics justice spirituality peace*  
**Title: Youth Smokeless Tobacco**

**Youth Smokeless Tobacco Use**

**Indicator:**

The percentage of Leon County middle school (MS) and high school (HS) youth reporting use of smokeless tobacco at least once in their lifetimes or within the past 30 days.

**Commentary:**

According to Florida Youth Substance Abuse Surveys (FYSAS), Leon County youth have significantly increased their use of smokeless tobacco, especially among high school students. Leon County high school youth increased lifetime use about two and a half times from 2002 to 2008 and past 30 day use nearly seven times over the same time period. Middle school lifetime smokeless tobacco use has increased by 20% from 2002 to 2006 while past 30 day use has remained fairly stable at an average of 4.4%. The 2000 FYSAS only reported, “... *the state of Florida and Leon County, ... relatively low use of smokeless tobacco compared to cigarette use.*” That said, the use of smokeless tobacco may be becoming more of a concern if it contributes to being another vehicle for substance abuse.

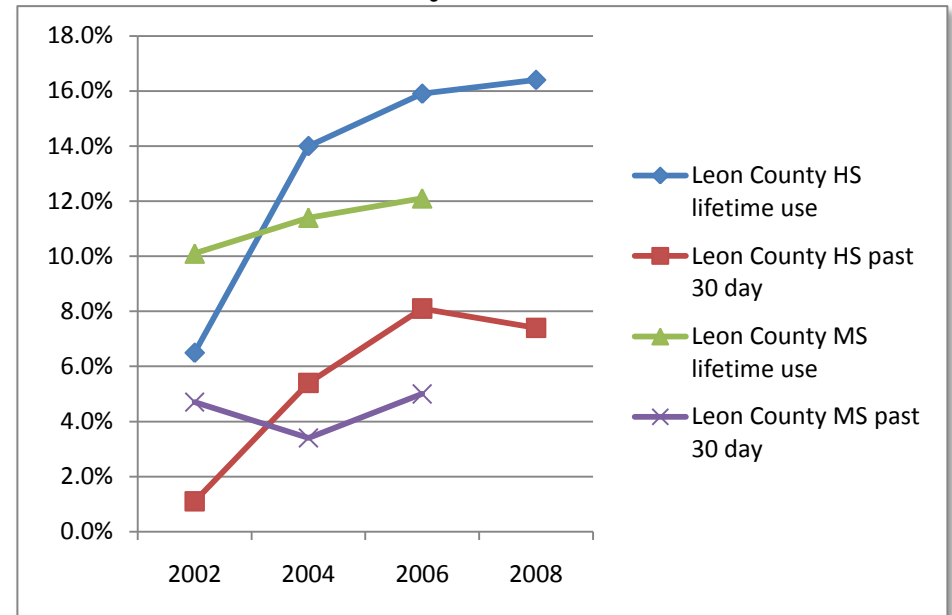
**Source(s):**

Florida Youth Substance Abuse Surveys (FYSAS), even years from 2000 to 2008, Leon County Reports.

<http://www.dcf.state.fl.us/mentalhealth/publications/fyas/>

*Note: FYSAS 2000 report does not provide specific data for smokeless tobacco, and the 2008 report only provides high school data. Additionally, no statewide data available.*

**Chart 1: Leon County Use of Smokeless Tobacco**



**Table 1: Leon County Use of Smokeless Tobacco**

	2002	2004	2006	2008
Leon County HS lifetime use	6.5%	14.0%	15.9%	16.4%
Leon County HS past 30 day	1.1%	5.4%	8.1%	7.4%
Leon County MS lifetime use	10.1%	11.4%	12.1%	-
Leon County MS past 30 day	4.7%	3.4%	5.0%	-



The Tallahassee-Leon County  
21<sup>st</sup> Century Council  
*Quality of Life / Sustainability*  
**COMMUNITY INDICATOR**

**Quality of Life / Sustainability Segment:**  
ECONOMIC PROGRESS PROFITS PROSPERITY  
SOCIAL **PEOPLE**  
ENVIRONMENTAL PLANET PLACE  
*governance ethics justice spirituality peace*  
**Title: Youth Tobacco Use**

**Youth Tobacco Use**

**Indicator:**

The percentage of Leon County (LC) middle and high school youth reporting use of tobacco – cigarettes and chewing tobacco – at least once in their lifetimes or within the past 30 days; and Florida statewide averages for past 30 day use.

**Commentary:**

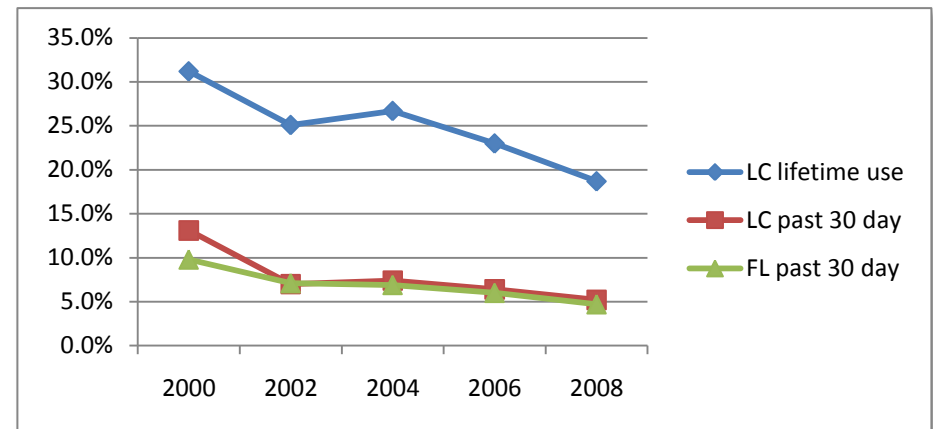
According to Florida Youth Substance Abuse Surveys (FYSAS), Leon County youth have been consistently reducing their use of tobacco over the period 2000 to 2008. Overall both middle and high school youth have significantly reduced the reported use of tobacco sometime in their lifetimes, with middle school students dropping from 31.2% to 18.7%, and a corresponding reduction among high school youth from 56.5% to 33.1%. Similarly, past 30 day reported use is lower in both age groups, dropping from 13.1% to 5.2% among middle school youth and from 26.2% to 11.7% for high school students. The overall trend is consistent even with what appears to be an anomaly in 2002: in that year the Leon County sample size of 375 was considerably smaller than the typical range of 1000-1400 in other years. Additionally, the past 30 day use for both middle and high school Leon County youth overall from 2000-08 has been nearly identical to statewide averages.

**Source(s):**

Florida Youth Substance Abuse Surveys (FYSAS), even years from 2000 to 2008, Leon County Reports.

<http://www.dcf.state.fl.us/mentalhealth/publications/fysas/>

**Chart 1: Middle School Tobacco Use**



**Chart 2: High School Tobacco Use**

