



The Tallahassee-Leon County
 21st Century Council
Quality of Life / Sustainability
COMMUNITY INDICATOR

Quality of Life / Sustainability Segment:
 ECONOMIC PROGRESS PROFITS PROSPERITY
 SOCIAL PEOPLE
 ENVIRONMENTAL PLANET PLACE
governance ethics justice spirituality peace
Title: Drinking and Driving

Drinking and Driving

Indicator:

The rate of all alcohol-related motor vehicle traffic crashes; and the rate of Florida drinking and driving youth ages 15-29 in all motor vehicle crashes, and in fatal crashes, per licensed driver.

Commentary:

Leon County continues to have some of the highest alcohol-related motor vehicle crash rates statewide, and 21 continues to be the peak age for drinking drivers involved in all motor vehicle crashes, including fatalities. Yet, notably, the incidence of licensed drivers throughout Florida involved in all types of alcohol-related crashes, including fatal accidents, rises remarkably from age 15 to 18, makes some adjustment but continues to increase up through age 21 after which it declines sharply to age 24, and thereafter takes on a more gradual decline to age 29, and beyond. Clearly, youth ages 18-24 are at the highest risk for drinking and driving (and for associated consequences). At the same time, the alarming rise in youth ages 15-18 drinking and driving indicates the need to start responsible decision-making intervention strategies at the earliest possible age.

Source(s):

Florida Department of Highway Safety and Motor Vehicles, Traffic Crash Statistics Reports; <http://www.flhsmv.gov/html/safety>

Note: alcohol-related crash statistics disaggregated by age for Leon County not readily available.

Chart 1: Alcohol-Related Motor Vehicle Crashes

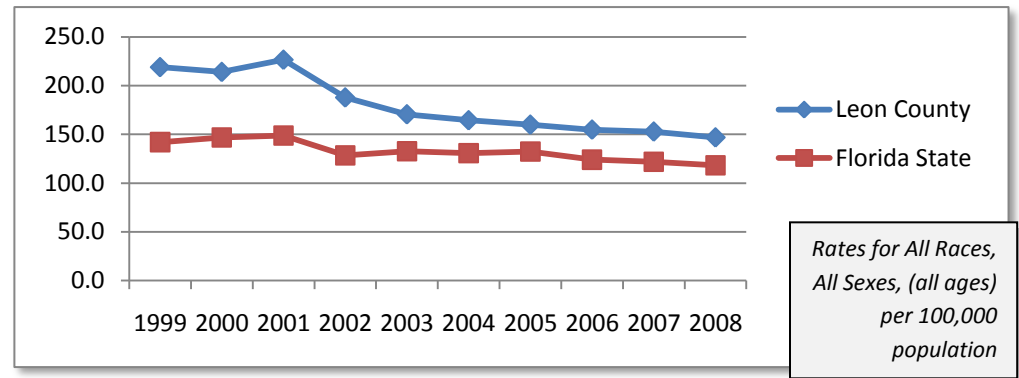
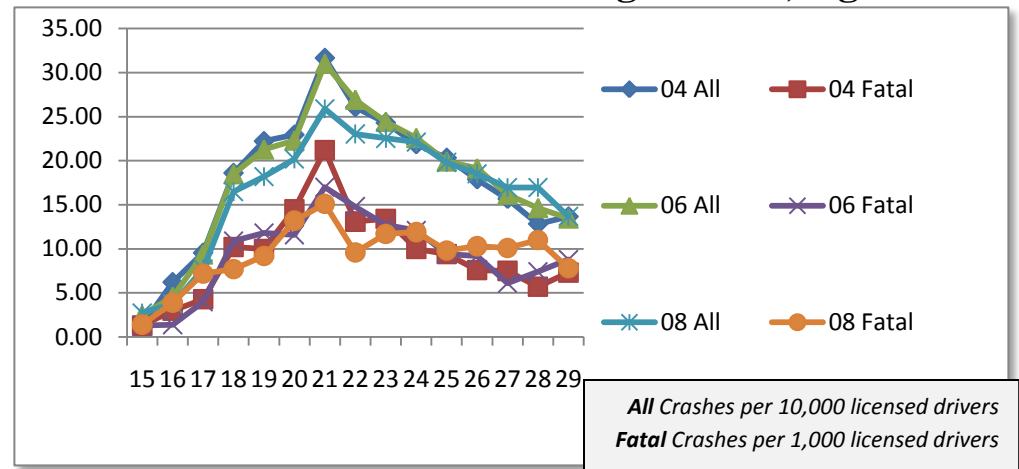


Chart 2: Florida Drinking Drivers, Ages 15-29





The Tallahassee-Leon County
21st Century Council
Quality of Life / Sustainability
COMMUNITY INDICATOR

Quality of Life / Sustainability Segment:
ECONOMIC PROGRESS PROFITS PROSPERITY
SOCIAL **PEOPLE**
ENVIRONMENTAL PLANET PLACE
governance ethics justice spirituality peace
Title: Total Arrests and Substance Abuse

Total Arrests and Substance Abuse

Indicator:

The total number of all types of arrests in Leon County, all ages, and total arrests per 100,000 population; and the total number of drug/narcotic, liquor law violation and driving under the influence (DUI) arrests, all ages.

Commentary:

The total number of all types of arrests, all ages including juveniles, showed a marked decline over the period 1999 to 2003, and thereafter increased to a peak in 2008, ending in 2009 at 11,969 significantly above the 2003 low of 10,965. Following the 1999-2003 five-year decline total arrests per capita or 100,000 population have remained fairly steady at an average of 4,676. From 1999-2002 the total number of drug arrests has declined significantly, liquor law violations dropped between 1999 and 2008, while DUIs present a more constant arrest pattern. However, drug, DUI and liquor law violation arrests all declined over the period 2006 to 2009 while total arrests stayed high. This may be an indication of a changing, unstable economy where adults and juveniles alike choose potential income-generating and/or other criminal activities (e.g. motor vehicle theft, robbery, stolen property; sexual or other assault) as opposed to those requiring personal expense (purchase of drugs, alcohol).

Source(s):

FL Department of Law Enforcement (FDLE) , Uniform Crime Reports, http://www.fdle.state.fl.us/Content/getdoc/a324add7-5dd6-4201-9696-93bfd76bc36c/UCR-Home.aspx#Semi-Annual_Reports

Chart 1: Total Arrests and Arrests per 100,000

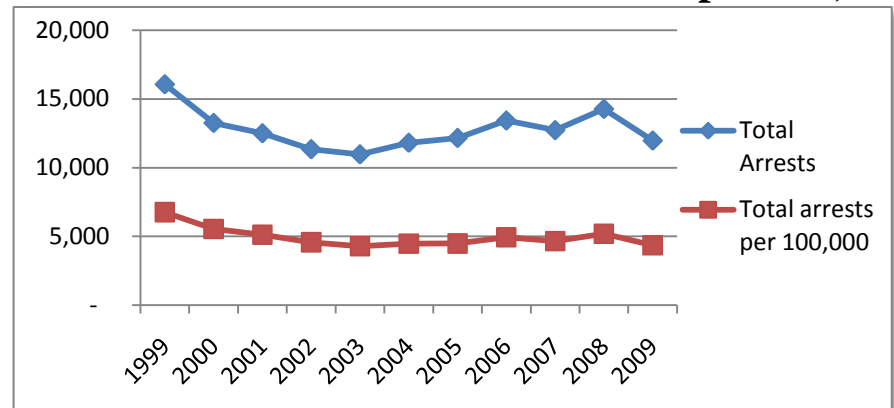
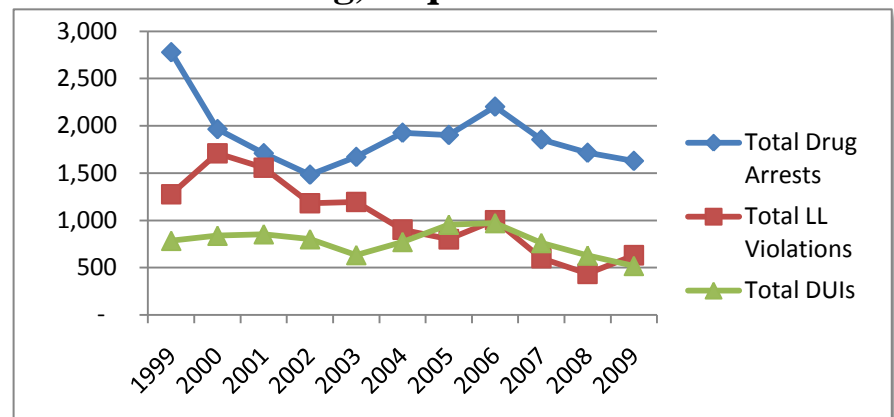


Chart 2: Drug, Liquor Law and DUI Arrests





The Tallahassee-Leon County
21st Century Council
Quality of Life / Sustainability
COMMUNITY INDICATOR

Quality of Life / Sustainability Segment:
ECONOMIC PROGRESS PROFITS PROSPERITY
SOCIAL **PEOPLE**
ENVIRONMENTAL PLANET PLACE
governance ethics justice spirituality peace
Title: Youth and Motor Vehicle Crashes

Youth and Motor Vehicle Crashes

Indicator:

The reported number of licensed drivers in motor vehicle crashes per 1,000 licensed drivers, ages 15-18 and 19-21; and the number of child passengers injured or killed in motor vehicle crashes per 100,000 population, ages 5-11 and 12-18; both Leon County and statewide.

Commentary:

Leon County has had more than twice the number of youth age 19-21 in motor vehicle crashes per 1,000 licensed drivers than the state rate 2007-08. Leon County has also had higher rates of motor vehicle crashes in the 15-18 age group at about 1.7 times state averages. The rate of young people age 12-18 injured or killed in Leon County over the two three-year periods has been similar to the statewide average. However, Leon County children age 5-11 have been injured or killed in motor vehicle crashes at about 1.25 times the state averages 2005-08. The significant number of Leon County young licensed drivers in motor vehicle crashes, and child passengers injured or killed, are indicators that should be examined carefully.

Source(s):

FloridaCHARTS Reports and FloridaCHARTS *School-aged Child and Adolescent Profile*, <http://www.floridacharts.com/charts/>

Note: Florida Community Health Assessment Resource Tool Set (CHARTS) *School-aged Child and Adolescent Profile* is currently available for Leon County for years 2007 and 2008.

Chart 1: Licensed Drivers in Motor Vehicle Crashes

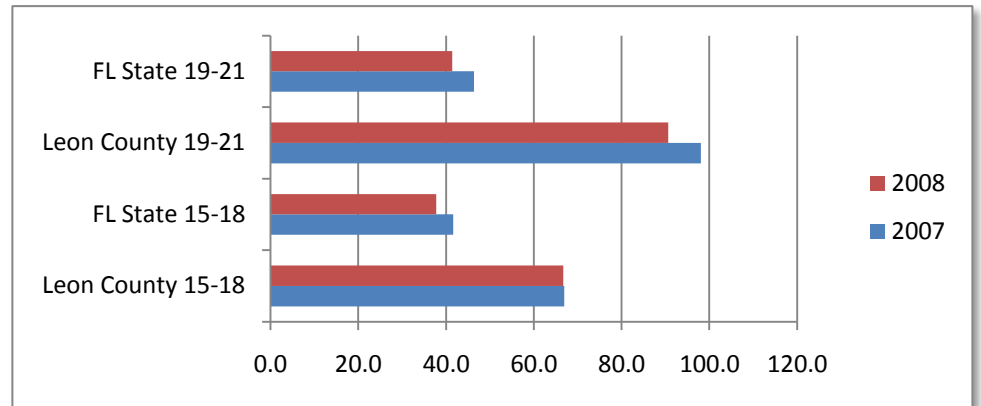


Chart 2: Child Passengers Injured or Killed

