



The Tallahassee-Leon County
21st Century Council
Quality of Life / Sustainability
COMMUNITY INDICATOR

Quality of Life / Sustainability Segment:
ECONOMIC PROGRESS PROFITS PROSPERITY
SOCIAL **PEOPLE**
ENVIRONMENTAL PLANET PLACE
governance ethics justice spirituality peace
Title: Teenage Pregnancy and Teen Births

Teenage Pregnancy and Teen Births

Indicator:

The reported rate of births to teenage mothers age 15 to 17 and 18 to 19, per 1,000 females; and the percentage of repeat births to teenage mothers; both Leon County and statewide comparisons.

Commentary:

Florida youth age 18 to 19 appear to have had an alarming number of births at about 74 per 1,000 Florida females over years 2005-08, about 3.5 times the Leon County rate of 21 births per 1,000. Leon County also had lower rates of births to teen mothers age 15-17 as compared to statewide averages but the differences are not as extreme. Also the changes between 2005-07 and 2006-08 in Leon County are negligible. The percentage of repeat births, however, indicates a different scenario. The Leon County percentage of repeat births to young women age 18 and 19 has been higher than the statewide average for both 3 year periods. Moreover, the latter period 2006-08 in percentage of repeat births in both age groups seems to indicate a marked increasing trend.

Source(s):

FloridaCHARTS Reports and FloridaCHARTS *School-aged Child and Adolescent Profile*, <http://www.floridacharts.com/charts/>

Note: Florida Community Health Assessment Resource Tool Set (CHARTS) *School-aged Child and Adolescent Profile* is currently available for Leon County for years 2007 and 2008.

Chart 1: Teenage Pregnancy, Average 3-Year Rates

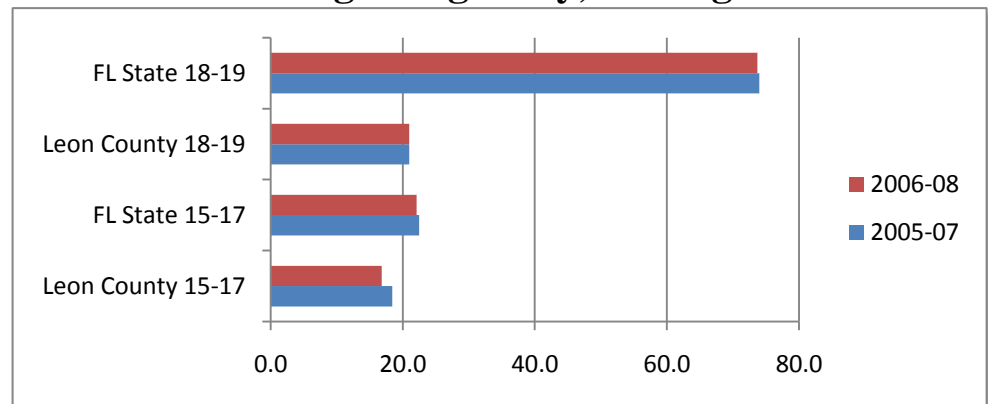
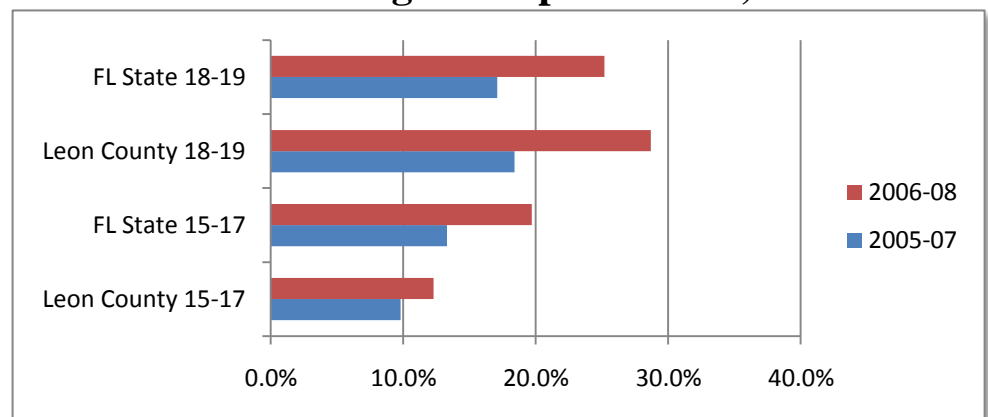


Chart 2: Percentage of Repeat Births, 3-Year Rates





The Tallahassee-Leon County
 21st Century Council
Quality of Life / Sustainability
COMMUNITY INDICATOR

Quality of Life / Sustainability Segment:
 ECONOMIC PROGRESS PROFITS PROSPERITY
 SOCIAL **PEOPLE**
 ENVIRONMENTAL PLANET PLACE
governance ethics justice spirituality peace
Title: Emergency Room Admissions

TMH Emergency Room Admissions

Indicator:

Tallahassee Memorial Hospital (TMH) emergency room (ER) admissions of youth ages 17-20 and 21-24 with measurable blood alcohol levels (BALs) of less than 0.02, and up to 0.20 and above.

Commentary:

Tallahassee Memorial Hospital (TMH) reports that youth ages 17-20 have BALs when admitted to the emergency room at almost the same rate as legal drinking age 21-24 year olds. ER admissions of youth ages 17-20 with measurable BAL in the "toxic" range (0.20 and above) as a percentage of total BAL-related admissions was only slightly less than young adults 21-24; moreover, data was nearly identical in May 2009 and significantly higher in July 2009. Overall, of the young people admitted who had measurable BAL, an average of one in six 17-21 year olds and one in four 21-24 year olds had dangerously high (>0.20) BAL levels. It appears that alcohol is a contributing factor to accidents and injuries requiring ER visits as much for underage high school and college students as legal age young adults. Also, binge drinking to toxic levels appears to be a recurring problem for both age groups.

Source(s):

Tallahassee Memorial Hospital (TMH) Emergency Room Admissions Reports, January-July 2009 and January-March 2010.

Note: August-December 2009 data was not provided.

Chart 1: TMH ER Admissions w/ Measurable BAL

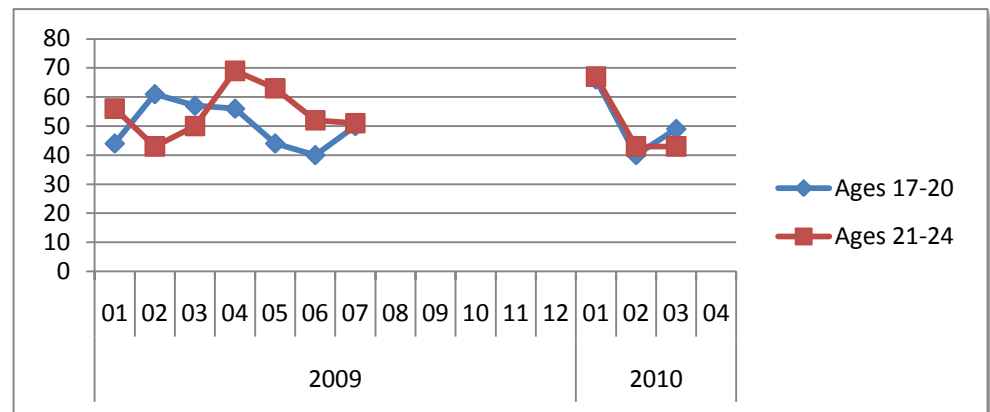
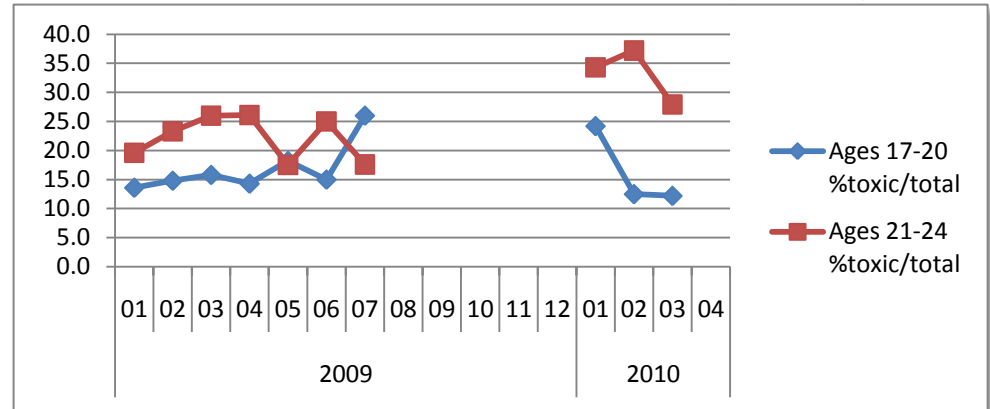


Chart 2: % Measurable BAL >0.20 ("toxic")/ Total





The Tallahassee-Leon County
21st Century Council
Quality of Life / Sustainability
COMMUNITY INDICATOR

Quality of Life / Sustainability Segment:
ECONOMIC PROGRESS PROFITS PROSPERITY
SOCIAL **PEOPLE**
ENVIRONMENTAL PLANET PLACE
governance ethics justice spirituality peace
Title: Youth Sexually-Transmitted Diseases

Youth Sexually-Transmitted Diseases

Indicator:

The reported number of Sexually-Transmitted Disease (STD) cases for all races all sexes per 100,000 youth ages 15-19 and 15-24, Leon County and Florida statewide.

Commentary:

The reported number of STD cases per 100,000 youth ages 15-24 has been consistently and at times significantly above the state average since 2001. Reported cases statewide held more or less constant from 1999 to 2005 but have on the rise 2005-08. Leon County reached a high number of reported cases in 2002-03, and has increased markedly since 2007. The FloridaCHARTS *School-aged Child and Adolescent Profile* reported STD cases ages 15-19 (3-Year Rates) for 2005-07 and 2006-08 with Leon County Quartile ratings of 4, or least favorable, in both 3-year periods. The increase from 2007 to 2008 is alarming if it continues as a trend.

Source(s):

FloridaCHARTS Reports and FloridaCHARTS *School-aged Child and Adolescent Profile*, <http://www.floridacharts.com/charts/>

Note: Florida Community Health Assessment Resource Tool Set (CHARTS) Reports available for the decade 1999-2008. School-aged Child and Adolescent Profile (with 3-year average rates) is available for Leon County for years 2007 and 2008.

Chart 1: Reported STD Cases, Ages 15-19 and 15-24

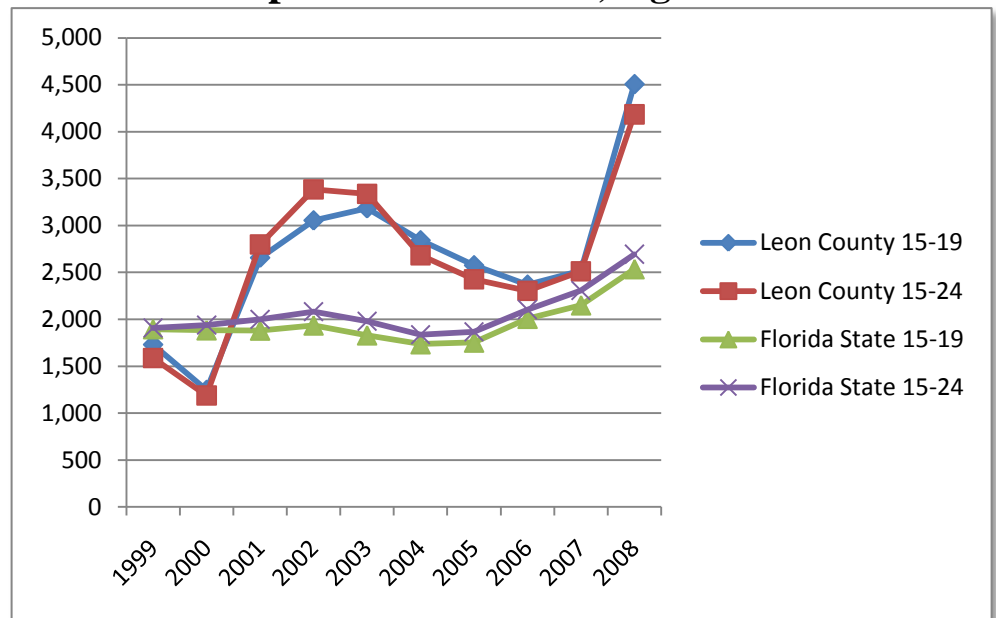


Table 1: Reported STD Cases, Ages 15-19 and 15-24

	1999	2000	2001	2002	2003	2004	2005	2006	2007	2008
Leon County 15-19	1,731	1,247	2,656	3,054	3,183	2,842	2,575	2,369	2,518	4,506
Leon County 15-24	1,586	1,189	2,799	3,385	3,337	2,682	2,425	2,303	2,513	4,185
Florida State 15-19	1,896	1,884	1,882	1,936	1,830	1,736	1,754	2,007	2,150	2,535
Florida State 15-24	1,909	1,940	2,000	2,082	1,980	1,837	1,867	2,104	2,307	2,694