

Quality of Life Report



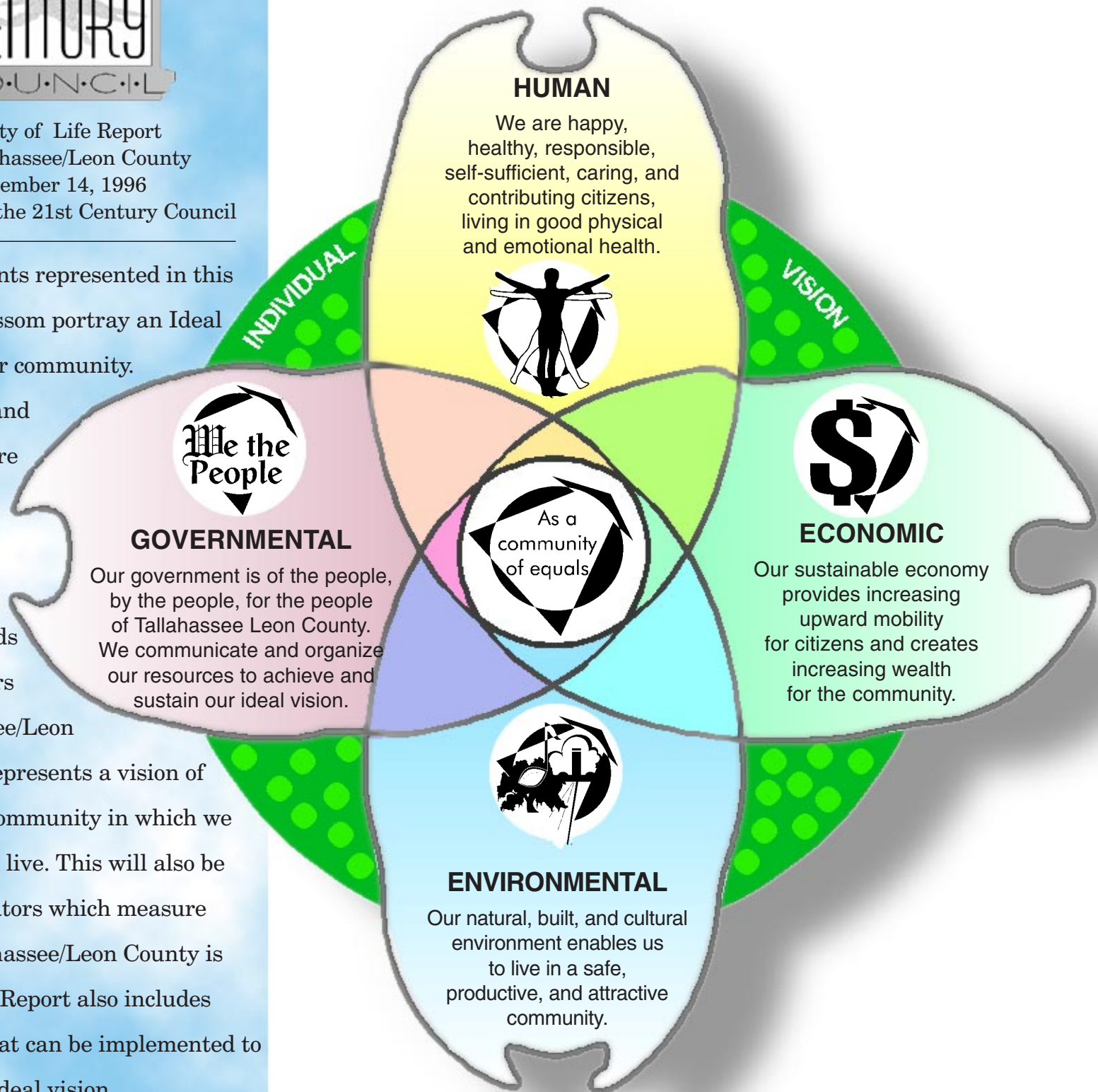
Quality of Life Report
for Tallahassee/Leon County
November 14, 1996

Prepared by the 21st Century Council

The statements represented in this dogwood blossom portray an Ideal Vision for our community.

This Vision and the Report are based on the ideas of hundreds of your friends and neighbors in Tallahassee/Leon

County. It represents a vision of the kind of community in which we would like to live. This will also be tied to indicators which measure where Tallahassee/Leon County is headed. The Report also includes strategies that can be implemented to achieve the ideal vision.



This Report contains:

- An Ideal Vision of Tallahassee/Leon County.
- Related indicators of our success in achieving that vision.
- A Vision Map of the relationships that exist.
- Strategies and indicators of success.
- A story of our community in 2016, and what we did in 1996 to get there.

21ST CENTURY COUNCIL
 918 RAILROAD AVENUE
 TALLAHASSEE, FLORIDA 32310
 222-4684 FAX 224-4932

1996-97 Board of Directors

President
 Frank C. Broen
Vice President
 Ted Thomas
Secretary
 Darcy A. Foster

Treasurer
 Kurt Spitzer

Directors
 James M. Cahill
 Tim Center
 Kraig Conn
 Bob Content
 Linda Dilworth
 Freddie Groomes
 David Hall
 Rick Hall

Ozie H. Hankerson
 Charles B. Harvey, Jr.
 Thomas P. Keating
 Alexis MacMillan

Mike Madsen
 John Marks, III
 Blan McBride
 Bill Moeller

F. Perry Odom
 Jane Parsons
 LeVerne Payne
 Oral R. Payne

Burenette Smith
 June Strauss
 Cathy Thomas-Kilpatrick
 John Van Gieson

Karen Walby, Ph.D.
 Sharon Walker
Ex Officio

The Honorable Steve Meisburg
 City Commissioner
 The Honorable Emily Millett,
 School Board Member
 The Honorable Gary Yordon,
 County Commissioner

Quality of Life Report

Editor & Graphic Layout
 Frank C. Broen

Associate Editors
 Darcy A. Foster
 Thomas P. Keating
 Emily Millett

Marcelle Kinney
Researcher
 Christine Johnson

21st Century Council Quality of Life Report

Introduction

The 21st Century Council is proud to release its Quality of Life Report. This report integrates the results of our 1991 and 1993 Quality of Life Reports. This approach allows flexibility to identify and report on changing conditions, updates of current conditions, as well as provide for further involvement of the community members who may seek opportunities to participate in the development and preparation of the Quality of Life Report on a biannual basis.

This year's Report is much different from previous Quality of Life Reports, since it incorporates the Council's suggested "Community Vision for the Tallahassee/Leon County Community" and ties that vision to the Council's first draft of "indicators," which tell us how we are doing. The Report's format focuses on the Community Vision which is symbolized by the dogwood blossom. Each petal of the flower represents a component of the community: Human, Economic, Environmental, and Governmental. The Report also includes a graphic representation of the "vision," a map of possible implementation strategies, and shares two stories of a futuristic Tallahassee/Leon County community in the 21st Century, what it could look like in the year 2016 and what we did in 1996 to get there.

The use and treatment of the indicators are targeted to measure the status of certain occurrences or demographic data, listed by identified sources at specific points in time. The data comes from a variety of sources. It is important to note that indicators should be valid and reliable.

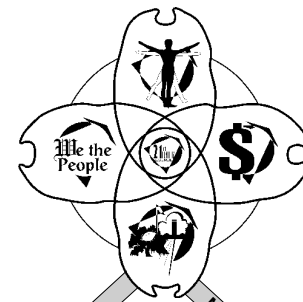
Our ideal vision for the community

Our specific community and organizational visions

Our personal and individual visions

These are the indicators which measure the progress toward our ideal vision

and this is what we can do to reach those goals



MEGA Goal
 The results which benefit our community
 e.g., A sustainable economy

Community Goal

Indicators of Success
 e.g., Average personal income

MACRO Goal
 The results which successful organizations strive to reach
 e.g., Expanding economic base

Organizational Goal - Employers, Families, Government, etc.

Indicators of Success
 e.g., Number of business starts/failures

MICRO Goal
 The results which individuals strive to achieve to make organizations successful.
 e.g., Employees' skills and opportunities

Individual Goal - Employee, Individual, Citizen, etc.

Indicators of Success
 e.g., Median family income

Means are the actions and strategies which we use to reach the MEGA, MACRO, and MICRO Goals which make up our ideal vision. The major strategies we use include LEARNING, SAFETY, HEALTH, and LAND USE.

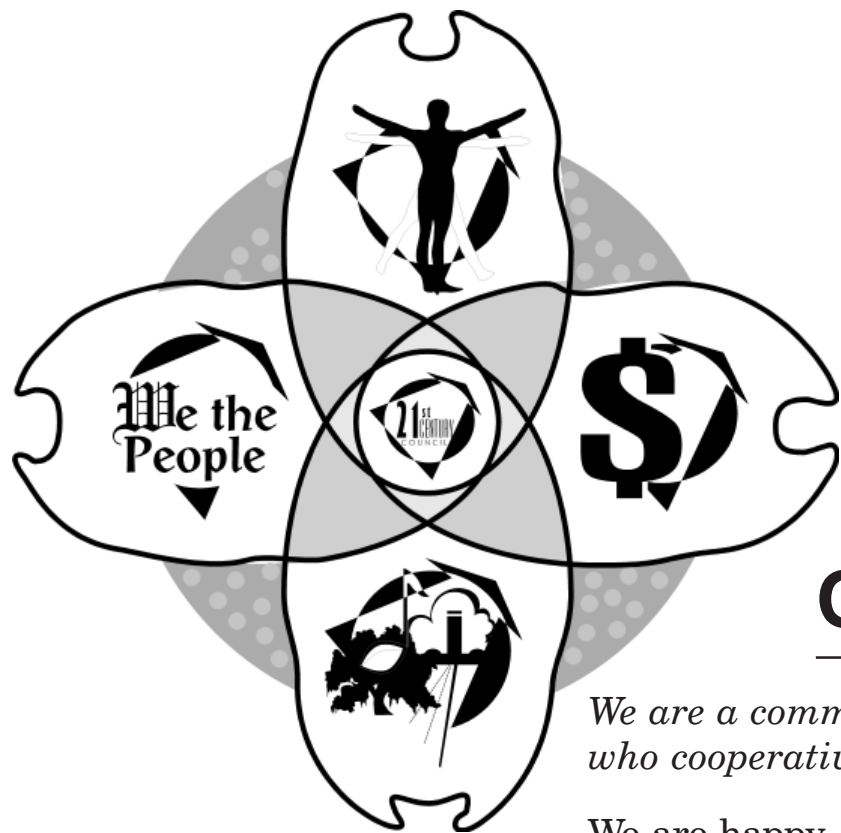
Means to achieve goals

Adapted from Roger Kaufman's Organizational Elements Model

The Council acknowledges that in this compilation of Report's indicators there are gaps, incomplete data and a need for alternate data sources; however, at this time there is no universal and systematic methodology to coordinate consistency between data sources and time frames. As the indicators are refined over time, the Council anticipates that targeted indicators will be identified for most of the themes of each petal of the vision sectors, as well as the implementing strategies.

Let us know what you think about this document. Please provide us with any comments or suggestions to improve this community vision. Send your comments to 918 Railroad Avenue, Tallahassee, FL 32310 or E-mail us at fcbroen@aol.com. We welcome you to join the council as a partner. We are venturing on new and exciting times as we communicate this vision and implement strategies to achieve this vision for the citizens of our community.

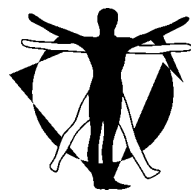




Our Community Vision

We are a community of equals who value the dignity and worth of all people who cooperatively create and maintain a diverse community where:

We are happy, healthy, responsible, self-sufficient, caring, and contributing citizens, living in good physical and emotional health.



Family Goal: Personal, intimate, and loving partnerships form and sustain themselves. Every child is secure and loved.

Individual Goal: We make well-reasoned, thoughtful, challenging, and healthy lifelong decisions. We are life-long learners. We respect the rights of others. No person is under the care, custody or control of another person, agency, or substance.

Our sustainable economy provides increasing upward mobility for citizens and creates increasing wealth for the community.



Employer Goal: Our businesses earn sustainable profits. A diversity of economic opportunities exists for all citizens. Our economic base is expanding through development of exportable products and services. Employers produce goods and services which improve the quality of life.

Individual Goal: We have the opportunities, skills, and motivation to support ourselves and our families. Every family earns at least as much as it costs to live.

Our natural, built, and cultural environment enables us to live in a safe, productive, and attractive community which acknowledges and integrates with regional economic and ecological issues.



Neighborhood Goal: We function as a community of interconnected neighborhoods, capable of completing trips safely, effectively, and efficiently. Leon County's environment is healthful and aesthetically pleasing. Wildlife and plant life species and their habitats are maintained as valuable resources. Canopy roads and greenspaces are maintained as community cultural and scenic resources.

Individual Goal: Our air and water are clean and safe. Energy requirements are met while conserving non-renewable fuel resources. We actively participate in artistic, recreational, and/or athletic events.

Our government is of the people, by the people, for the people of Tallahassee Leon County. We communicate and organize our resources to achieve and sustain our ideal vision.



Governmental Goal: Each government agency is organized and funded to meet its objectives and contribute to the common good. They operate effectively with sound fiscal management and planning.

Individual Goal: The city and county governments provide quality services and are responsive to each citizen. Citizens contribute to the common good through financial support and personal involvement in government and service organizations.



Photo by Leon County Tourist Development Council



HUMAN

Community Goal

MEGA

We are happy, healthy, responsible, self-sufficient, caring, and contributing citizens living in good physical & emotional health.

Indicators

- *Reduced homelessness*
- *Improved racial harmony*



Personal, intimate and loving partnerships form and sustain themselves. Every child is secure and loved.

MACRO

Family Goal

Indicators of Success

- *Reduced births to teenagers*
- *Fewer abused and neglected children / elders*
- *Reduced divorce rate*
- *Fewer single parent families*
- *Fewer juvenile delinquents*
- *Fewer adult repeat offenders*



We make well reasoned, thoughtful, challenging, and healthy lifelong decisions. No person is under the care, custody, or control of another person, agency, or substance.

MICRO

Individual Goal

Indicators of Success

- *Improved Learning - (see page 20)*
- *Improved Health - (see page 18)*
- *Fewer juvenile delinquents*
- *Fewer elders in nursing home*
- *Fewer births to unwed mothers*
- *Increased self-sufficiency of elderly*

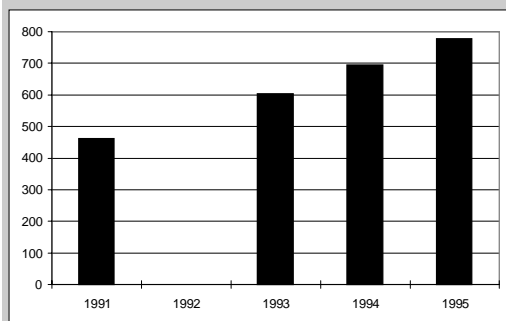
What we can *do*

- ➔ Establish a coordinating body to help fund and identify needs of children.
- ➔ Develop home ownership options for people in subsidized housing.
- ➔ Establish stable funding sources for homeless shelter.
- ➔ Provide community activities that support feelings of self worth for youth.
- ➔ Increase priority given to drug prevention and treatment.
- ➔ Ensure that all children learn successfully.
- ➔ Encourage community groups to react positively with each other.
- ➔ Develop a dynamic cultural action plan.

Means to achieve goals

Indicators of a successful community

Homeless

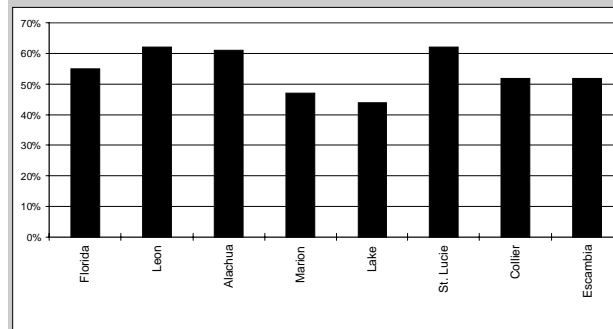


Number of homeless people in Florida and Leon County on any given day.

Explanation: People who are homeless lack shelter, food and the basic necessities of life.

Data Source: Tallahassee Coalition for the Homeless.

Affordability of Housing



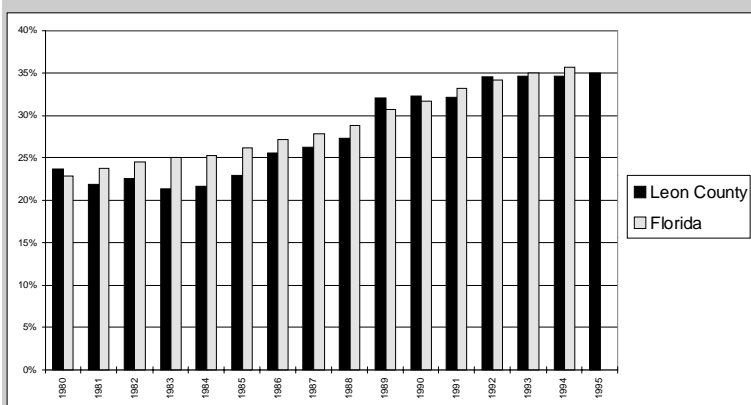
The percentage of low income households paying more than 30% of their income on housing costs. Low income is defined as household income 20% or more below the county median income (\$27,323).

Explanation: Affordable housing is a basic necessity of life.

Data Source: 1990 Census Data from the Division of Housing and Community Development, Florida Department of Community Affairs. Median county income from *Florida Statistical Abstract (1993)*, Table 5.58.

Indicators of successful families

Births to Unwed Mothers

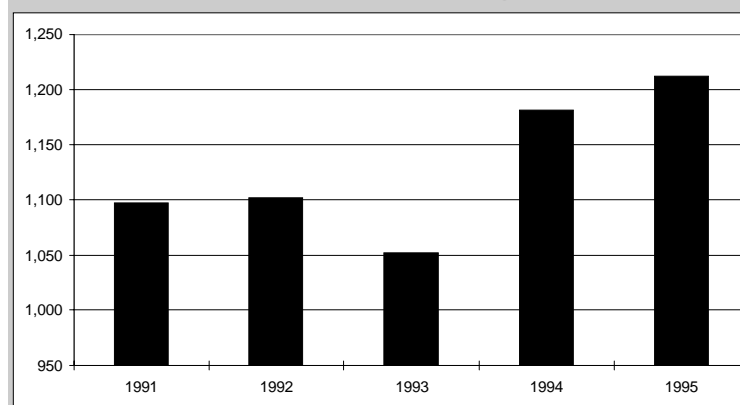


Percentage of babies who are born to unmarried mothers. The marital status of a mother is self-reported on the child's birth certificate.

Explanation: Single mothers are more likely than two-parent families or single fathers to live in poverty.

Data Source: Office of Public Health Statistics and Program Assessment, State Health Office, Florida Department of Health.

Child Abuse and Neglect



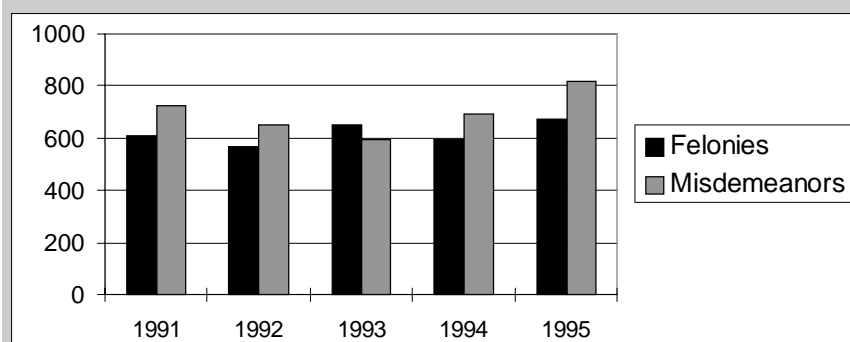
Number of child abuse and neglect victims (ages 0-17) whose maltreatment was verified or found to have some evidence of occurrence.

Explanation: Every child should be secure and loved.

Data Source: Florida Abuse Hotline Information System, Florida Department of Children and Families.

Indicators of successful individuals

Delinquent Youths

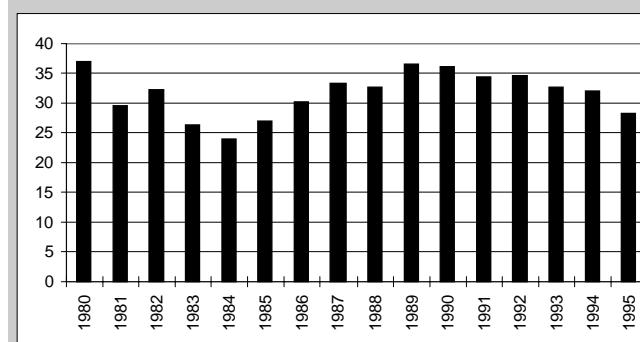


Number of children under 18 in Leon County referred to the Florida Department of Juvenile Justice because they were suspected of committing a felony or misdemeanor.

Explanation: A high juvenile crime rate reflects problems among our youth and the likelihood of criminal activity during adulthood.

Data Source: Florida Department of Juvenile Justice.

Births to Teenagers



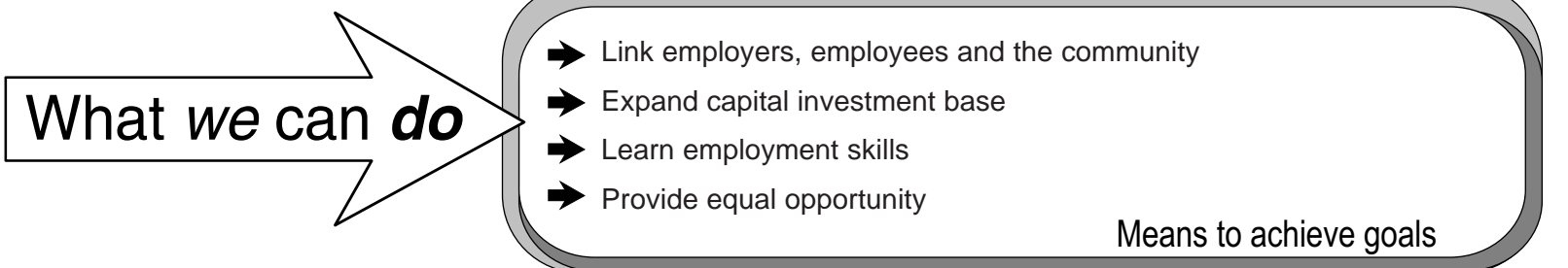
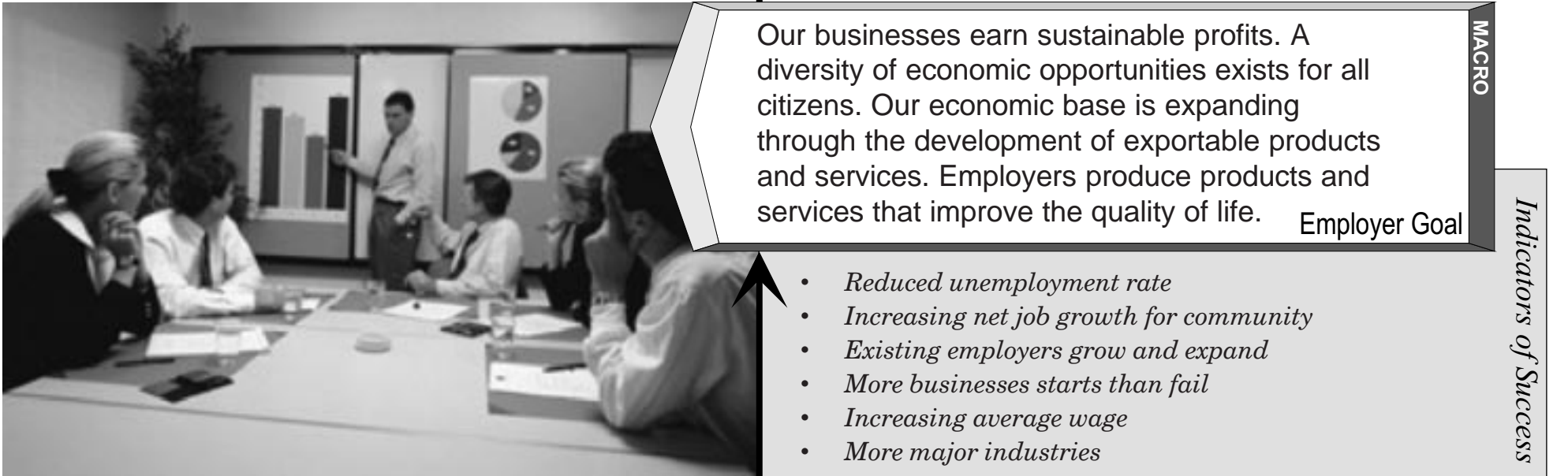
Number of births to mothers ages 15-19 for every 1,000 girls ages 15-19.

Explanation: Children born to teenage parents are more likely to have health problems, live in poverty, and receive poor parenting. Also teen parents often lack the education and economic means to raise their children.

Data Source: Office of Public Health Statistics and Program Assessment, State Health Office, Florida Department of Health.

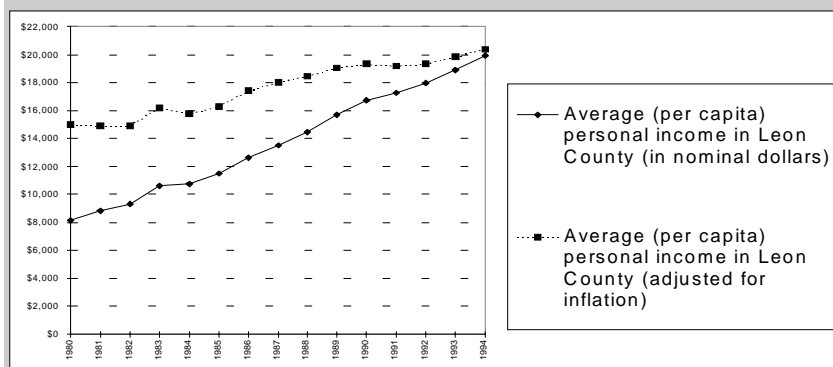


Photo by Teach America Corporation



Indicators of a successful economic community

Per Capita Income

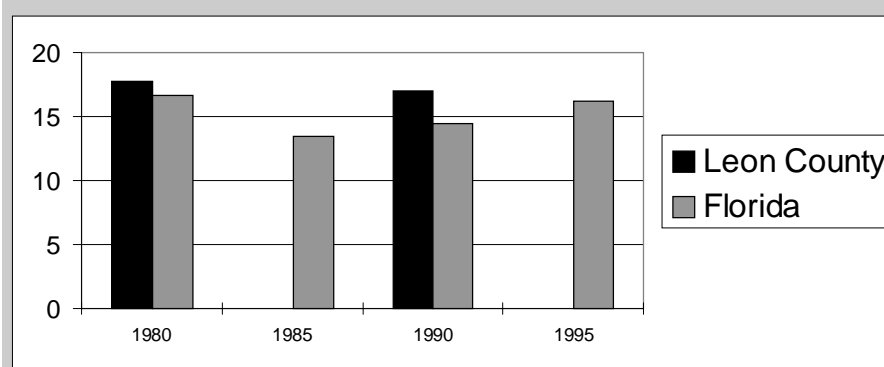


Average personal income from wages, public pensions, social security, interest, public assistance, and other sources. Inflation-adjusted means that income for each year is expressed in terms of 1995 dollars.

Explanation: Average income generally reflects a person's standard of living. This shows whether our incomes are keeping pace with the cost of living.

Data Source: U.S. Department of Commerce.

People in poverty



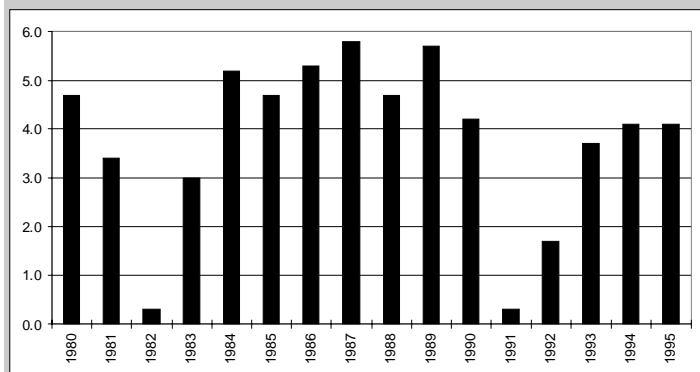
Percent of people living in poverty in Leon County and Florida. People in poverty are those with an income level below 100% of the federal poverty level (1995 family of 4 earning less than \$15,150 per year)

Explanation: Poverty is linked to low educational attainment, health problems, crime and other conditions that weaken families and communities.

Data Source: 1980,1990, Decennial Census, U.S. Bureau of the Census, Washington D.C. (Current Population Survey).

Indicators of successful employers

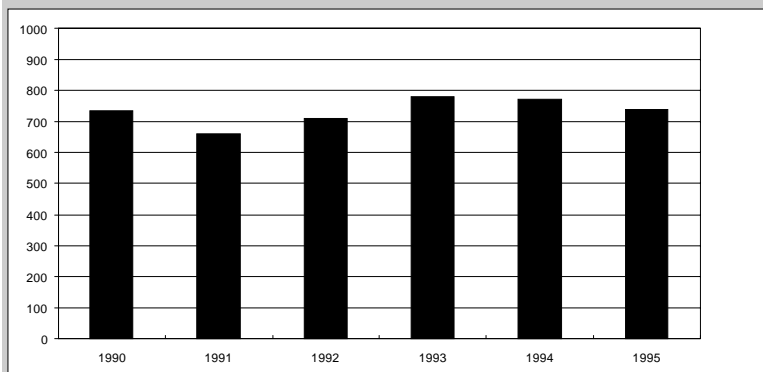
Job Growth



Percentage increase in the number of full and part-time jobs in Leon County
Explanation: Job growth is required to offset job loss and existing industries and to keep pace with population growth.

Data Source: Region 1 Economist, Florida Department of Labor and Employment Security.

Business Starts



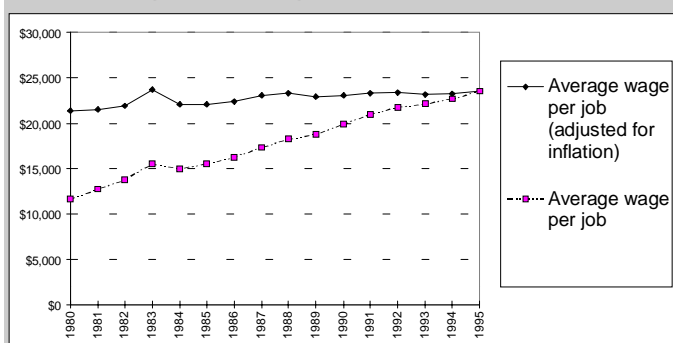
Number of new employer accounts opened under the Florida Unemployment Compensation Program. Excluded are sole proprietorships, the self-employed and small agricultural units.

Explanation: New businesses are expected to be the primary source of job growth in the next decade.

Data Source: Bureau of Tax, Division of Unemployment Compensation, Florida Department of Labor and Employment Security.

Indicators of successful employees

Average Wage

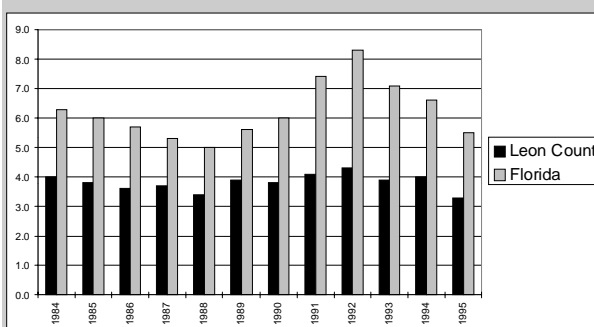


Average annual wage and salary of workers (in nominal dollars)

Explanation: Increased wages produce a higher standard of living, and a stronger economy for the state as a whole.

Data Source: ES-202 Employment and Wages Program, Bureau of Labor Market Information, Florida Department of Labor and Employment Security.

Unemployment Rate



Percentage of people age 16 and older who were unable to find work.

Explanation: Job loss can have a devastating impact on a person's life as well as state and local economies.

Data Source: Leon County: Region I Economist, Florida Department of Labor and Employment Security, Gainesville. Florida: Bureau of Labor Market Information, Florida Department of Labor and Employment Security.



Photo by Public Information Office, City of Tallahassee



ENVIRONMENT

Community Goal

MEGA

Our natural, cultural, and built environment enables us to live in a safe, productive, and attractive community which integrates with regional economic and ecological issues.

- *Improving air and water quality*
- *Aesthetic natural beauty rated excellent*
- *Built environment rated excellent*

Indicators



Photo by Leon County Tourist Development Council

We function as a community of interconnected neighborhoods, capable of completing trips safely, effectively, and efficiently. Leon County's environment is healthful and aesthetically pleasing. Wildlife and plantlife species and their habitats are maintained as valuable resources. Canopy roads and greenspaces are maintained as community cultural and scenic resources. Neighborhood Goal

MACRO

Indicators of Success

- *Maintain miles of historic canopy roads*
- *More acres of greenspaces*
- *Fewer congested roads*
- *Reduced waste generation rate*
- *Increasing recycling*



Photo by Leon County Tourist Development Council

Energy requirements are met while conserving natural fuel resources. Individual Goal

MICRO

Indicators of Success

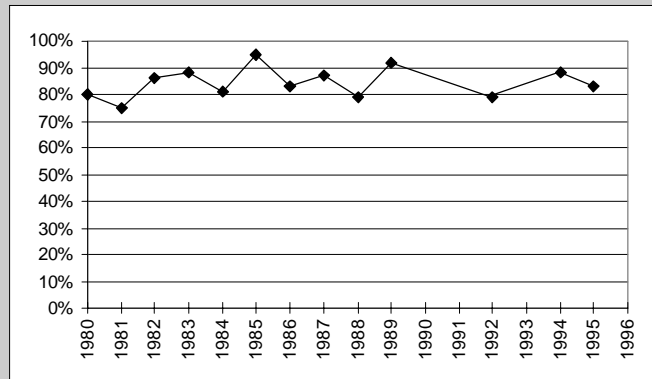
- *Reduced litter*
- *Decreasing gasoline consumption*
- *Tax revenues all subdivisions cover costs of public services and infrastructure*
- *Mixed use is achieved by zoning & planning*
- *Less strip commercial development*
- *Density of population reaches target numbers*

What we can **do**

- ➔ Growth management policies preserve neighborhoods, protect natural resources, encourage downtown development and discourage urban sprawl.
 - ➔ Financial and human resources provide opportunities to participate in arts and recreation.
- Means to achieve goals

Indicators of successful community environments

Air Quality

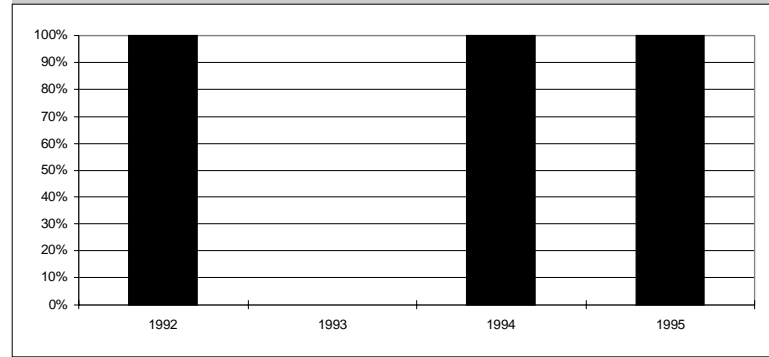


Percentage of days when the outdoor air quality in Tallahassee was excellent. (Defined as not exceeding 50% of the maximum acceptable ozone level. Ozone is the only pollutant measured in Tallahassee).

Explanation: Clean air is essential for people's health and well-being.

Data Source: Bureau of Air Monitoring and Mobile Sources, Florida Department of Environmental Protection

Wastewater Reuse



Percentage of total wastewater that has been treated and disinfected by wastewater treatment facilities and used for beneficial purposes.

Explanation: Water reuse helps conserve limited water supplies and provides an environmentally sound means of wastewater management.

Data Source: Domestic Wastewater Section, Bureau of Water Facilities Planning and Regulation, Florida Department of Environmental Protection.

Indicators of successful neighborhoods

Miles of Canopy Roads

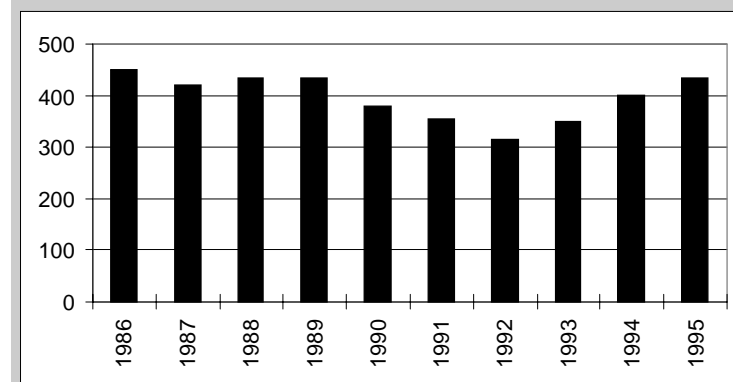


Miles of Canopy Roads in Leon County.

Explanation: Canopy roads are a distinctive feature of Leon County's natural and built environment.

Data Source: Leon County Planning Department.

Traffic Injuries



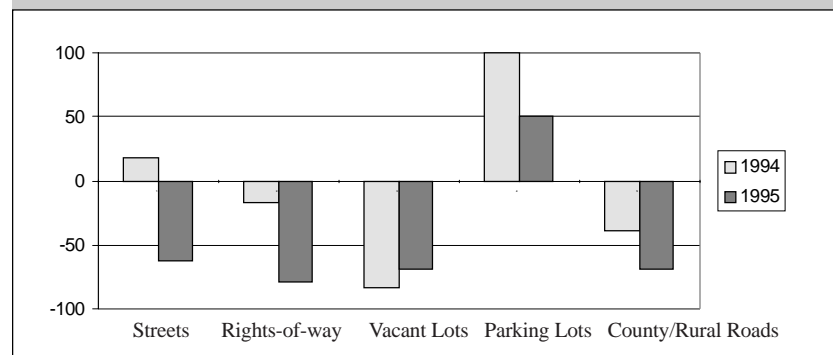
Number of people receiving incapacitating injuries in traffic crashes in Leon County as judged by the law enforcement officer at the scene of the crash.

Explanation: Traffic accidents threaten the personal safety of people on our roads and highways.

Data Source: Traffic Crash Facts Book, Office of Management and Planning Services, Florida Department of Highway Safety and Motor Vehicles.

Indicators of successful individuals

Litter

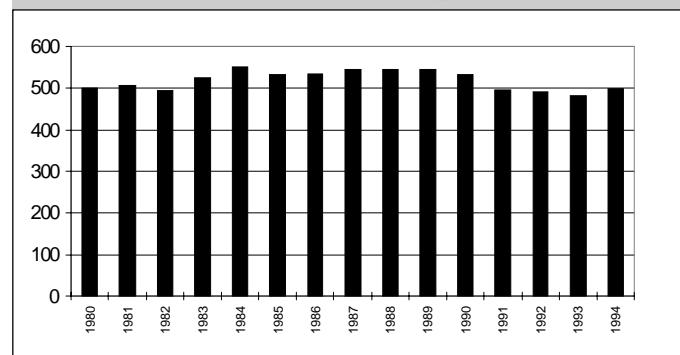


Percentage increase or decrease of litter and other debris along the roadside compared to 1993 based on a photometric index results.

Explanation: People can help preserve our natural beauty by reducing the amount of litter on our roads.

Data Source: Florida Litter Survey, Florida Center for Solid and Hazardous Waste Management, Gainesville.

Gasoline Consumption



Gallons of gasoline sold in Leon County per Leon County resident. It is estimated from taxes collected on the sale of gasoline.

Explanation: We are highly dependent on petroleum-based fuel for their transportation needs.

Data Source: Energy Office, Florida Department of Community Affairs .



Photo by Public Information Office, City of Tallahassee



GOVERNMENT

The government is of the people, by the people, and for the people of Tallahassee and Leon County. We communicate and organize to achieve our ideal vision.

- *Increasing trust in government*
- *Taxes appropriately expended*

Indicators

Community Goal

MEGA



Photo-illustration by Teach America Corporation

Each government agency and service organization is funded to meet its objectives and contribute to the common good. They operate effectively with sound fiscal management and planning.

Governmental Goal

- *Improved Safety (see page 14)*
- *Increasing public satisfaction with city services*
- *Reduced annual municipal service costs*
- *Decreased taxes while improving services: City, County, School Board*
- *Sound fiscal management*

Indicators of Success

MACRO



Photo-illustration by Teach America Corporation

The city, county, and school board provide quality services and are responsive to citizens. Citizens participate in government through financial support and personal involvement in government and service organizations.

Citizen Goal

- *Increasing percentage of registered voters*
- *Increasing percentage voting*
- *Reduced taxes relative to personal income*
- *Law enforcement rated excellent*
- *Fire safety rated excellent*
- *Traffic safety rated excellent*
- *Improved emergency preparedness*
- *Sufficient social elements, (e.g., Head Start)*

Indicators of Success

MICRO

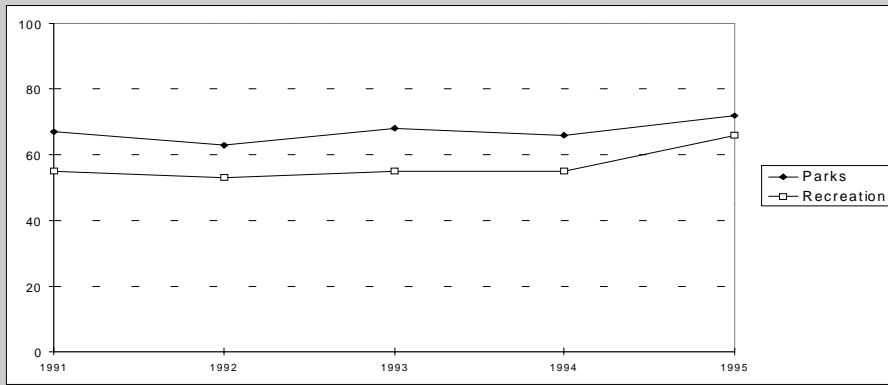
These four components — Human, Economic, Environmental, Governmental — make up our ideal vision. They make up a statement, in measurable terms, of what kind of world we want for tomorrow's child.

Indicators of successful government

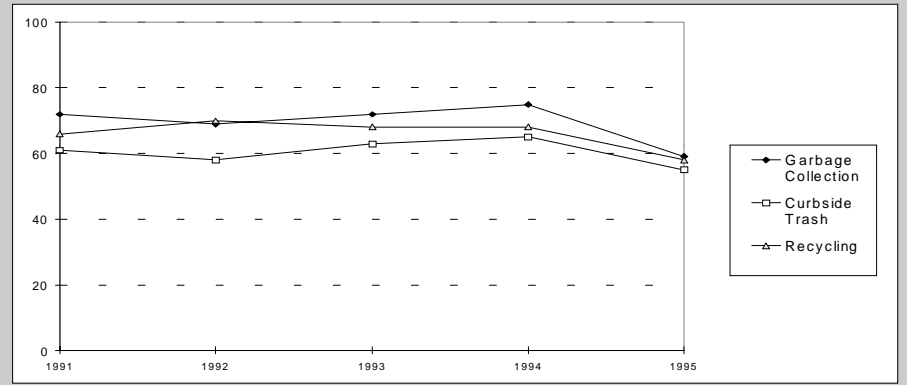
City Survey results

Percentage of Tallahassee residents who rate city services to be either excellent or good.
 Data Source: City of Tallahassee Resident Opinion Survey.

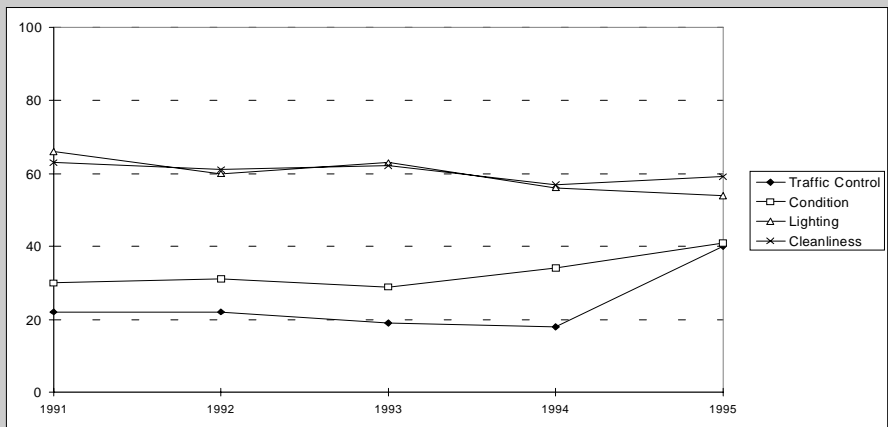
Parks and Recreation



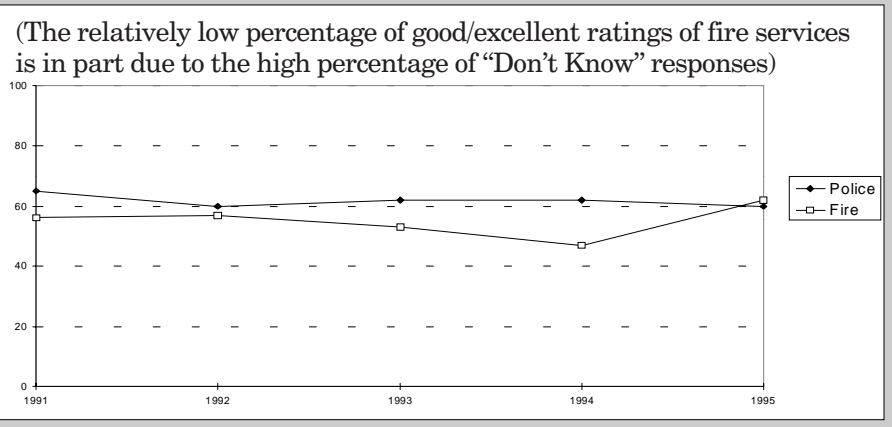
Solid Waste Disposal



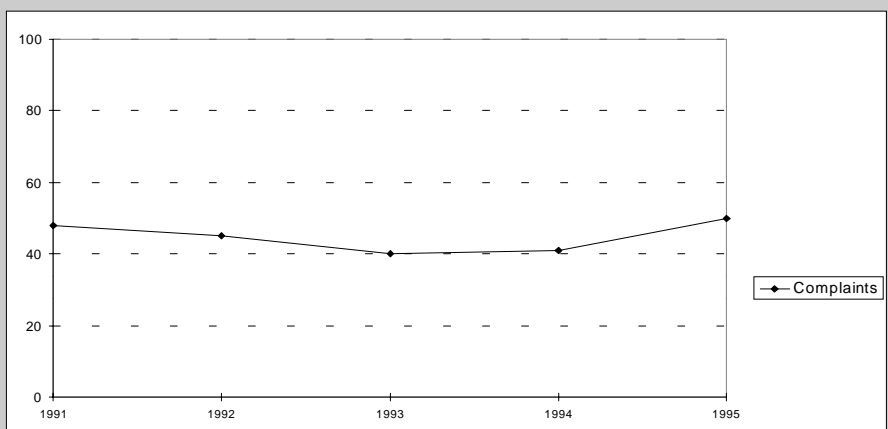
Road Conditions



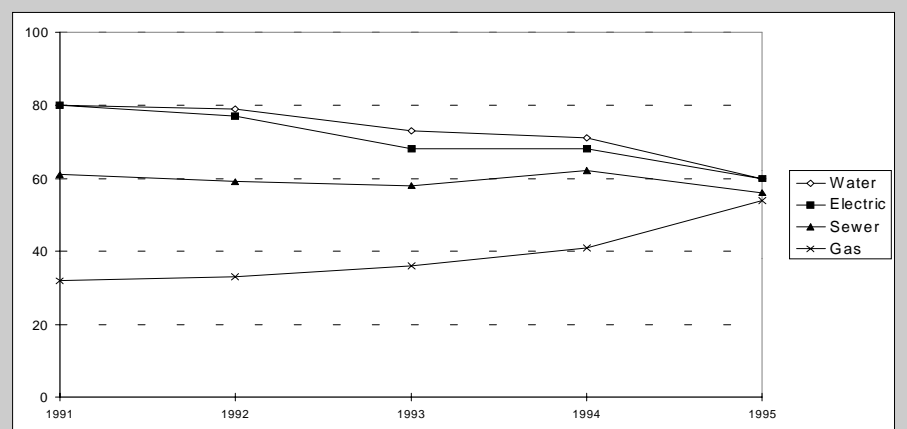
Police and Fire Protection



Handling Electric Customer Complaints

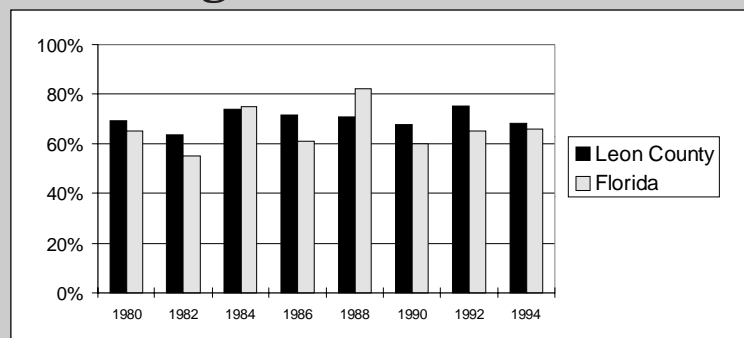


Utilities Services



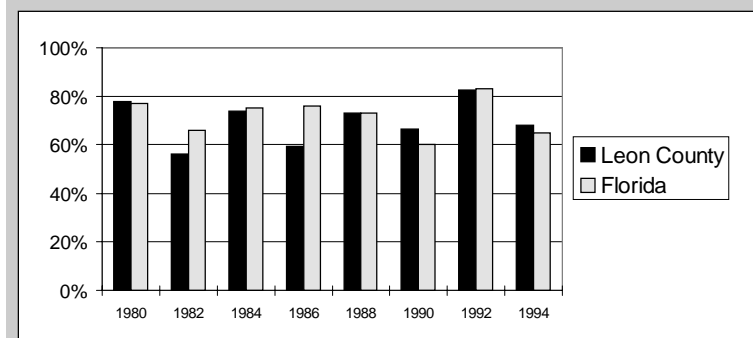
Indicators of involved citizens

Voter Registration



Percentage of Leon County adults registered to vote.
 Explanation: Those who register to vote are likely to have a greater interest in their government than those who do not.
 Data Sources: Supervisor of Elections Office, Leon County, Division of Elections, Florida Department of State.

Voter Turnout



Percentage of Leon County registered voters who voted.
 Explanation: The turnout on election day indicates the level of interest citizens have in their governance.
 Data Sources: Supervisor of Elections Office, Leon County, Division of Elections, Florida Department of State.

The Ideal Vision

At the center of this Vision Map is the dogwood blossom, representing the four parts of our Ideal Vision: **human, economic, environmental, and governmental**. Emanating from this ideal vision are representations of the different goals to help reach this ideal vision. Each one of these elements is related to each other, some directly, some indirectly through associated elements.

The lower half of the map depicts how we can create this **safe, productive, and attractive environment**. Our **natural** surroundings, together with the products of our **built** environment and our **cultural** resources, provide the overall environment that surrounds us and makes the community unique.

Connected to our environment and our human resources, our **economy** builds on an expanding economic base that enables us to provide for ourselves and our families. Linked to this economic strength are skills that we must have to make the right decisions to reach our ideal vision. Building on our formal schooling, we must continue to learn from ourselves and others, as well as learn from our successes and our mistakes. Education and life-long learning are both contributors to and the result of a strong economy and healthy environment.

From the environment of independent, self-reliant citizens who enjoy the prosperity of their efforts, we can also





reach out to each other by building on strengths and strengthening our weaknesses. This will ensure that no person is under the care, custody, or control of another person, agency, or substance.

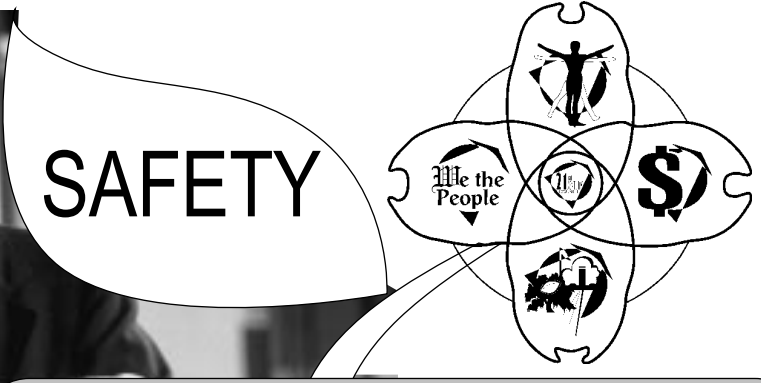
To our governing bodies we must give of our talent, time, and financial resources to ensure that we have the infrastructure to reach and sustain our ideal vision. Our citizens are the foundation of our school board, city, county, state, and federal governments by which we achieve unity in the community, as well as the world that we all share.

The rays of light radiating in our vision map reflect the global world of which we are part. Our resources touch the communities around us. We tap the natural and human resources from nearby and far away places to sustain ourselves. By making our community a better place for us to live, we help make a better world for **all** to live.

Together we can be a community of equals — happy, healthy, responsible, self-sufficient, and caring individuals living in good physical and emotional health.

This is a vision presented by the 21st Century Council as a map to our future. The vision map does not specify or prescribe the actions to implement to achieve this community vision; however, it does identify the desired direction or the landmarks to look for on the way to our ultimate destination — OUR FUTURE.

TALLAHASSEE/
LEON COUNTY
VISION MAP



All citizens will live and work in a safe, secure, and crime free environment, free from prejudices and fear. No one will be physically impaired or die due to fire or traffic accidents, and we will be prepared for medical and natural emergencies.
Safety Goals

- *Reduced violent crime rates*
 - *No deaths due to crime*
 - *Reduced non-violent crime rates*
 - *Reduced juvenile crime rates*
 - *Reduced per capita loss due to fire*
 - *No fire related deaths*
 - *Fewer traffic fatalities and injuries*
 - *Increased disaster response rates*
 - *Increased individual emotional and physical safety*
- Indicators of Success



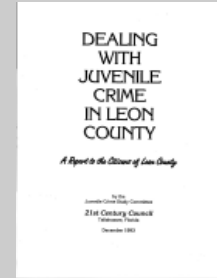
All citizens will recognize and respect the rights of others. There will be voluntary compliance with all public health and safety requirements.
Individual Goals

- *Less domestic abuse and neglect*
 - *Reduced recidivism rate of offenders*
 - *Fewer Leon County residents incarcerated*
 - *Fewer fires*
 - *Fewer traffic crashes*
 - *Fewer moving violations*
 - *Fewer accidents by vehicle malfunction*
 - *Fewer repeat traffic offenders*
 - *Drivers without licenses*
- Indicators of Success

Photo by Leon County Schools

Strategies to Achieve the Vision

The pages located before the Vision Map contain the goals of the ideal vision. The following pages provide strategies to achieve the previously identified goals and are linked by subject title.



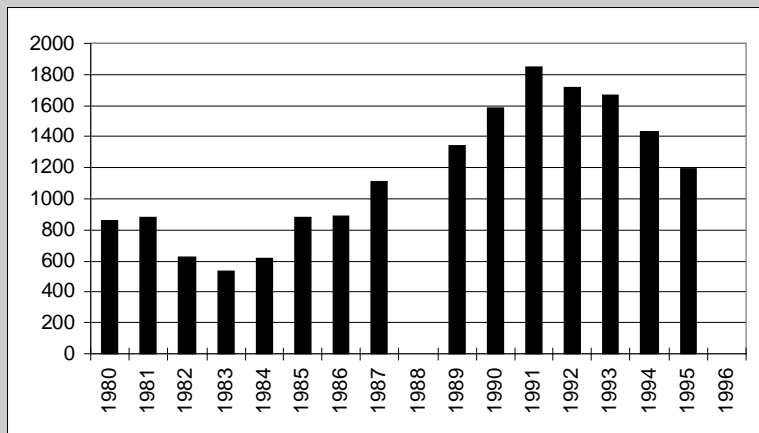
The Council's first in-depth study was the "Juvenile Crime and Justice Study." This comprehensive report was completed in 1993 and has been instrumental in the community's approach to solving the problem of juvenile crime. This report has been used as a model by the Florida Legislature and other communities. Formation of the Juvenile Justice Council, the Leon County Boot Camp and more recent juvenile crime prevention programs are tangible results of the study's recommendations.

Means to achieve goals

<p>Law Enforcement</p> <ul style="list-style-type: none"> • Increase cases solved • Appropriate sentencing • Increase arrests • Improve bldg. security • Educate offenders • Design crime-free environments 	<p>Fire Safety</p> <ul style="list-style-type: none"> • Fire prevention education • Improved fire inspections • Improved fire-resistant building design and codes • Fire detectors • Sprinkler systems 	<p>Traffic Safety</p> <ul style="list-style-type: none"> • Vehicle inspection • Expanded driver education • Improved traffic engineering • Public use of mass transit • Improved enforcement of traffic laws 	<p>Emergency Preparedness</p> <ul style="list-style-type: none"> • Improved planning and response strategies • Education: all citizens know evacuation routes • Adequate public shelters • Establish Disaster Council • Disaster training
--	--	--	---

Indicators of a safe community

Violent Crime Rate



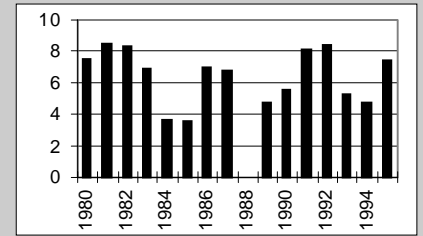
Number of violent crimes reported per 100,000 Leon County residents

Explanation: Because violent crimes involve personal confrontation between perpetrator and victim, they are considered more serious than other index crimes.

Data Source: Florida Department of Law Enforcement.

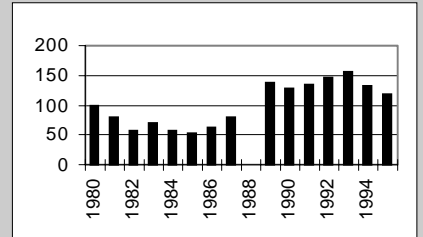
Murder:

Number of murders reported per 100,000 Leon County residents



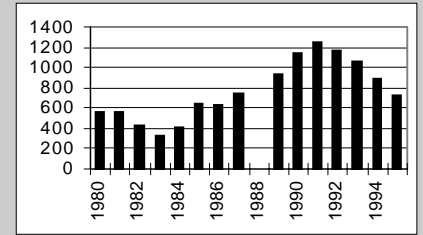
Forcible Sex Offenses:

Number of forcible sex offenses reported per 100,000 Leon County residents

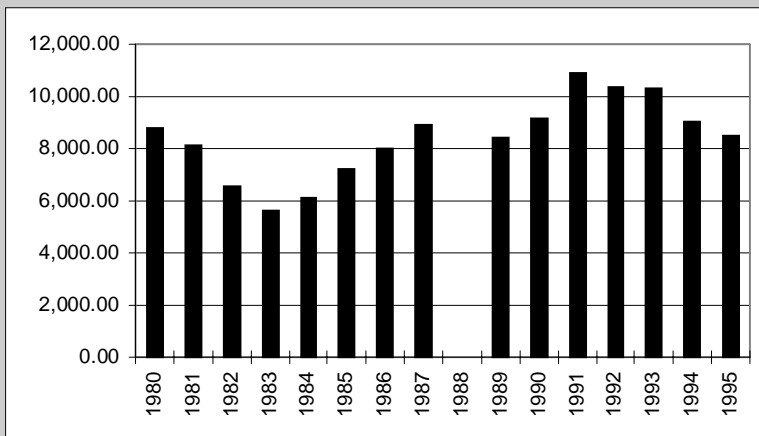


Aggravated Assault:

Number of robberies reported per 100,000 Leon County residents



Non-violent Crime Rate



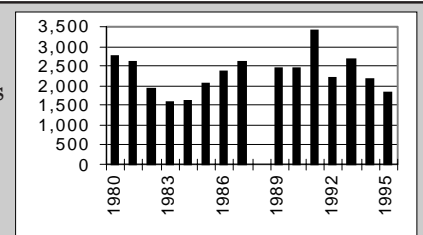
Number of non-violent crimes reported per 100,000 Leon County residents

Explanation: According to the 1994 *Voices of Florida* poll, Floridians view crime as the states number one problem.

Data Source: Florida Department of Law Enforcement.

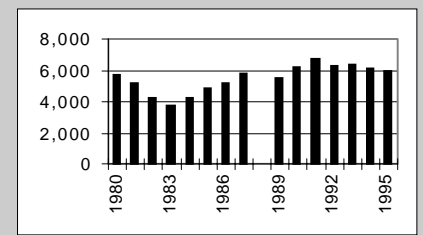
Breaking and Entering:

Number of burglary/breaking and enterings reported per 100,000 Leon County residents



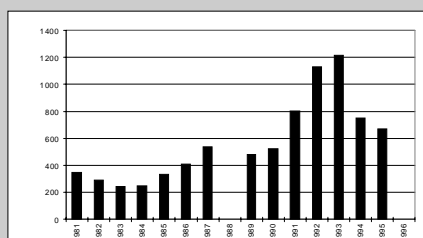
Larceny / thefts:

Number of larcenies/thefts reported per 100,000 Leon County residents



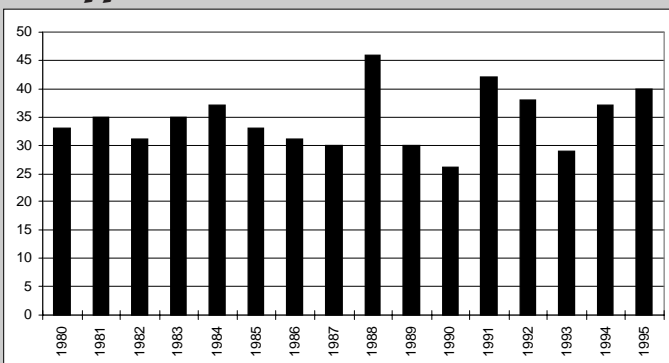
Motor Vehicle Thefts:

Number of motor vehicle thefts reported per 100,000 Leon County residents



Indicators of responsible individuals

Traffic Fatalities

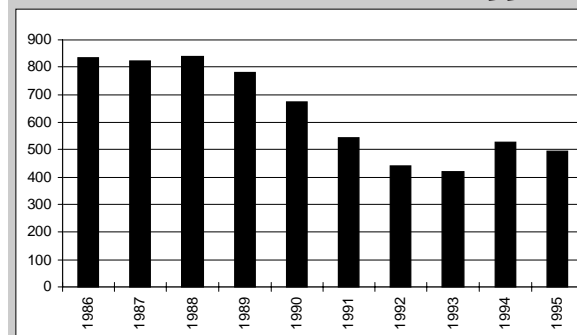


Number of deaths from traffic crashes in Leon County

Explanation: Traffic accidents threaten the lives and safety of people on our roads and highways.

Source: Office of Management and Planning Services, Florida Department of Highway Safety and Motor Vehicles.

Alcohol-related Traffic Crashes



Number of traffic crashes in Leon County that were alcohol-related. (Alcohol use was reported by the law enforcement officer at the scene of the crash).

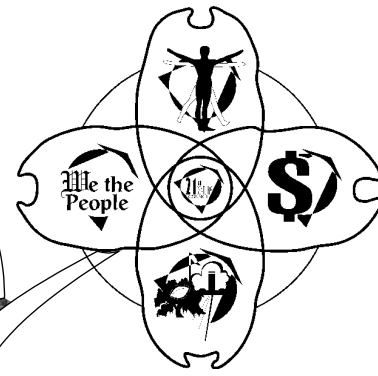
Explanation: Alcohol use is a major cause of traffic crashes that threaten our safety on roads and highways.

Data Source: Office of Management and Planning Services, Florida Department of Highway Safety and Motor Vehicles.



Photo by Teach America Corporation

**TRANSPORTATION/
LAND USE**



Transportation systems integrate with adjacent land use. People should be able to move and communicate freely on transportation and electronic networks. Urban sprawl is discouraged and urban fill is encouraged.

Land Use Goals

- *Increased developed acreage within the urban service area*
- *Reduced number of homes built in flood plains*

Indicators of Success



Photo by Leon County Tourist Development Council

We utilize multi-modal transportation alternatives. We are meaningfully involved in sector planning, land use and transportation decision-making.

Individual Goals

- *Fewer traffic injuries*
- *Increased Taltran usage*
- *Increased ridership for transportation disadvantaged*
- *Adequately use state roads (vehicles / lane miles)*

Indicators of Success

Means to achieve goals

Build a Community Vision

- Identify environmentally sensitive areas
- Identify areas where redevelopment, infill, and new development are to be encouraged
- Promote "quality community design"

Integrate Transportation and Land Use Planning

- Reorganize the local government planning process
- Create Community Sector Committees
- Conduct planning process at the community sector level

Implement Community Sector Plans

- Educate the general public using multi-media, work-shops and advocacy groups
- Create a "community display room"
- Inform the public concerning sector planning activities.

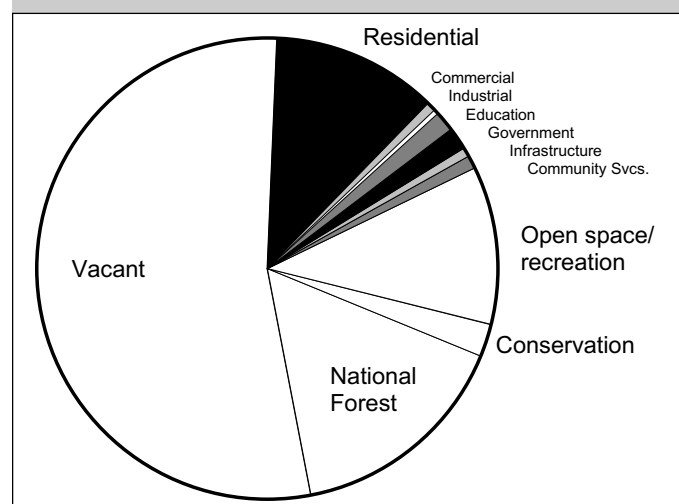


The Council's second study was the evaluation of the local transportation and land use planning process. This report was released in the fall of 1995. The recommendations of the study have been met with enthusiastic statewide support, and has been adopted by our city and county commissions. Two of the study's main recommendations include the integration of transportation and land use, and the utilization of sector planning. An example of sector planning would be the proposed Gaines Street corridor study.



Indicators of a physically successful environment

Land Uses in Tallahassee/Leon County



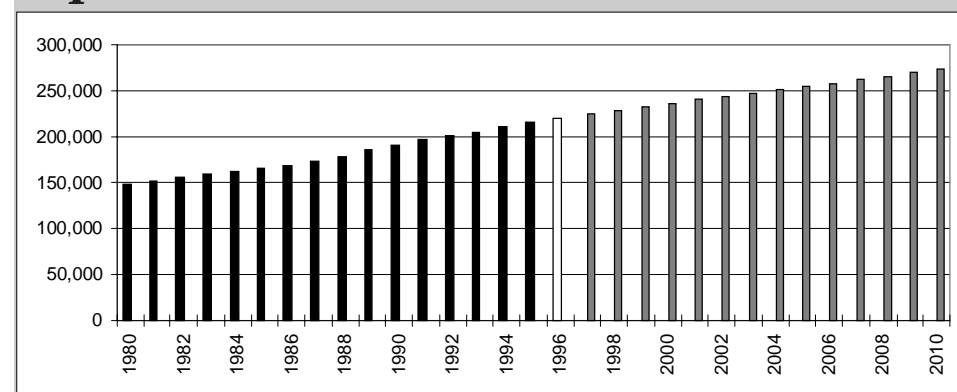
Land use acreage as a percentage of total acreage in Tallahassee/Leon County

Explanation: Land use reflects how we are managing growth in Leon County.

Data Source: Tallahassee Leon County Planning Department

Urban Sprawl: 45% of developed land (shaded area) is located outside the urban service area

Population



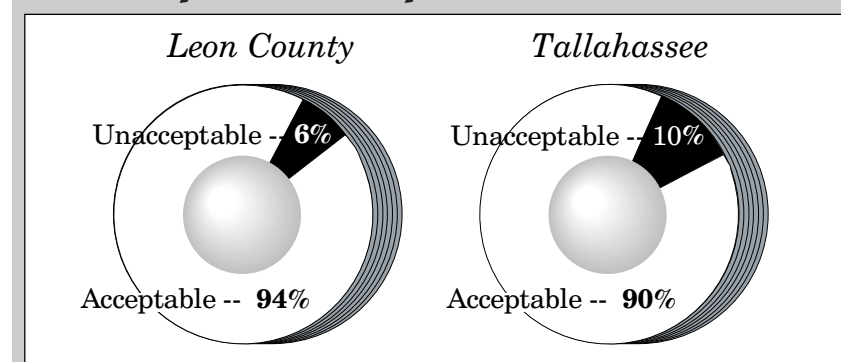
Population of Tallahassee/Leon County including projections for 1997 — 2010.

Explanation: Population growth increases demand on infrastructure and services.

Data Source: Revenue and Economic Analysis Unit, Office of Planning and Budgeting, Executive Office of the Governor.

Indicators of successful neighborhood facilities

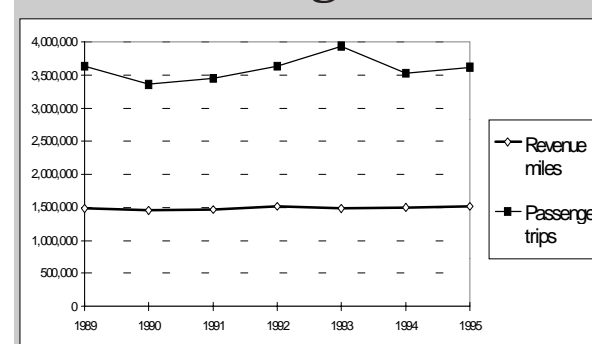
Level of Service for Roads



The percentage of road sections falling below an acceptable Level of Service. Level of Service reflects how easy it is for a driver to get from point A to point B. It is measured based on a variety of factors such as number of lanes, traffic signalization, and speed limit.

Data Source: Leon County Department of Growth and Environmental Management, July 25, 1995, City of Tallahassee Growth Management Department, November 17, 1995. Development Review Division.

Taltran Usage



Revenue miles: Number of passenger-carrying miles traveled by Taltran's mass transit vehicles.

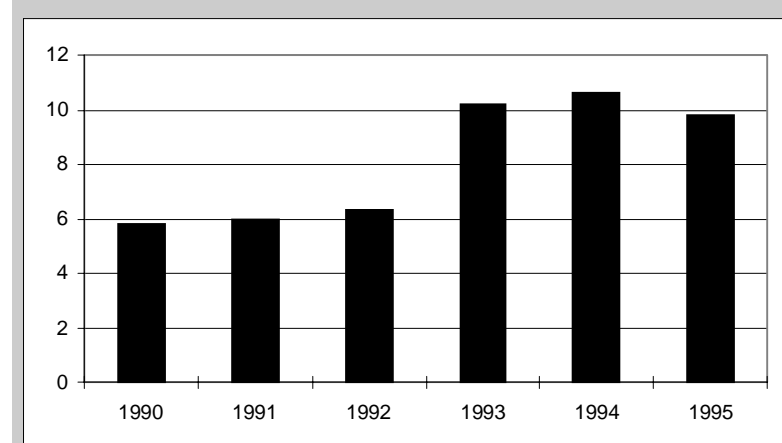
Passenger trips: Number of passenger trips taken on the Taltran mass transit system

Explanation: Use of alternative transportation conserves energy and decreases traffic on roads.

Data Source: Taltran, City of Tallahassee.

Indicators of successful individual land use

Waste Generation Rate

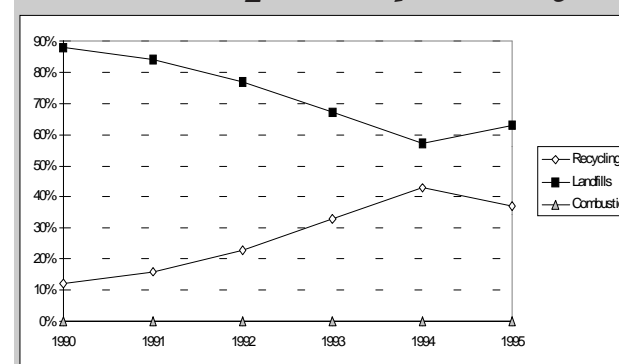


Pounds of municipal solid waste produced per Leon County resident per day.

Explanation: Landfills consume valuable acreage and can be a source of pollution.

Data Source: Waste Reduction Program, Bureau of Solid and Hazardous Waste, Florida Department of Environmental Protection.

Waste Disposal for City and County



Percentage of solid waste collected in Leon County that is recycled.

Percentage of solid waste collected in Leon County that is disposed in landfills. Percentage of solid waste collected in Leon County that is burned primarily in waste-to-energy plants.

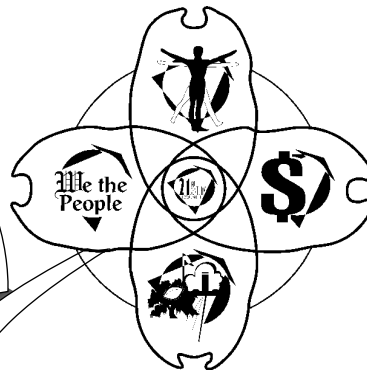
Explanation: Recycling is an alternative people can use to conserve land.

Data Source: Waste Reduction Program, Bureau of Solid and Hazardous Waste, Florida Department of Environmental Protection.



Photo by Leon County Tourist Development Council

HEALTH



Prevention-oriented quality health care programs are responsive to citizens' health requirements. Healthy babies are born to healthy mothers. People are healthy until they die.

Health Goals

- *Longer life expectancies*
- *Reduced number of reported preventable diseases*
- *No disabling infectious diseases*
- *Reduced number of low birth weight babies*
- *Decreased infant mortality rate*
- *Decreased percent of teen births to all births*
- *Fewer elderly in nursing homes*
- *Fewer reported cases of elderly abuse*

Indicators of Success

We will make well reasoned, thoughtful, challenging, and healthy decisions. All citizens are free of preventable diseases.

Individual Goals

- *Increased prenatal care in first trimester*
- *Decreased DUI fatalities*
- *Fewer accidents occurring as the result of DUI*
- *Reduced cigarette sales in Leon County*
- *Increased the number of immunized kindergartners*
- *Increased immunization for infants - 2 year olds*
- *Fewer deaths from suicides*
- *Fewer substance abuse cases*
- *Reduce recidivism of substance abuse program participants*

Indicators of Success



Means to achieve goals

Physical Fitness

- Adequate health care professionals
- Adequate facilities
- State of the art technology
- Preventive health care
- Affordable and adequate insurance for everyone
- In-house elderly care

Mental Fitness

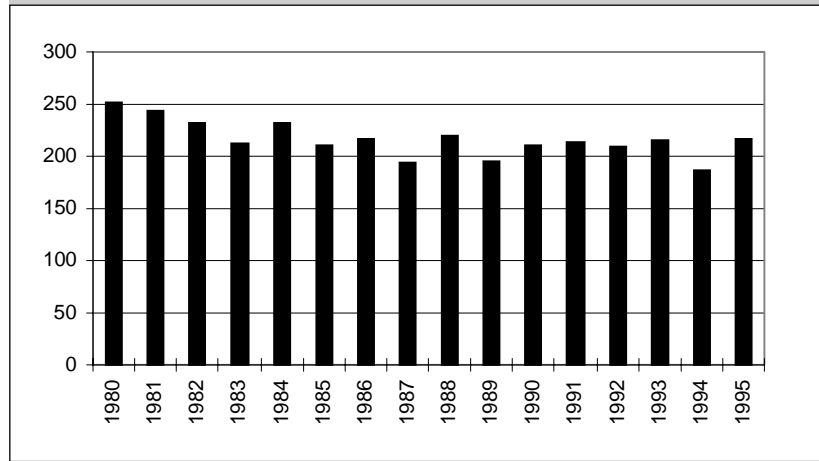
- Families are safe and secure
- No domestic abuse
- Adequate facilities for abused family members
- Substance abuse programs are successful

Safe and Healthy Surroundings

- Adequate food and water
- Adequate clothing
- Adequate housing
- No property is damaged or stolen
- Accessible environment

Indicators of a healthy community

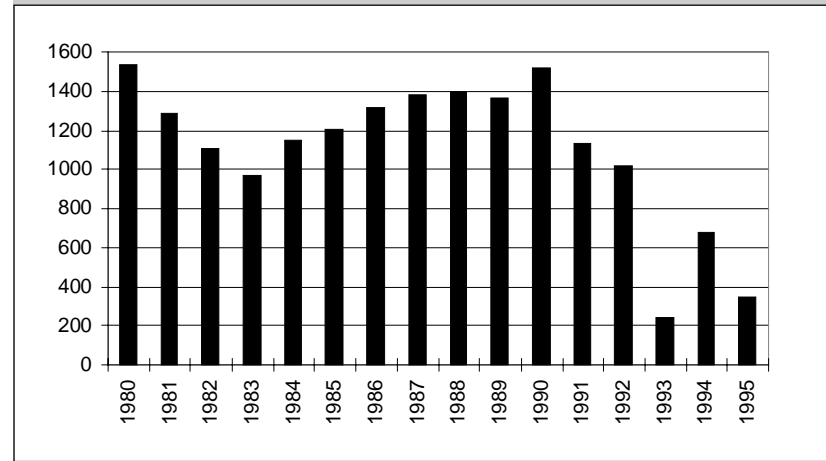
Premature Death



Number of Leon County residents who died before age 65 per 100,000 Leon County residents under age 65

Explanation: Premature deaths and the years of life lost should decrease as people get better health care and take better care of themselves.

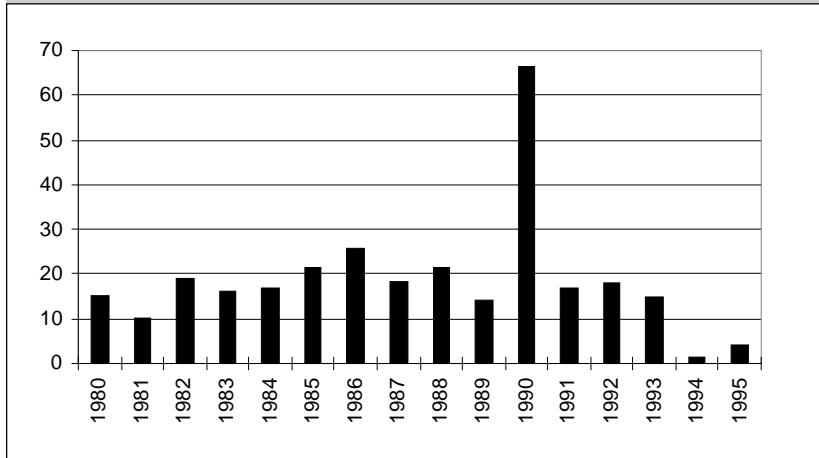
Sexually Transmitted Diseases



Number of new cases reported per 100,000 Leon County residents

Explanation: Sexually transmitted diseases include gonorrhea, syphilis and other diseases transmitted through sexual contact.

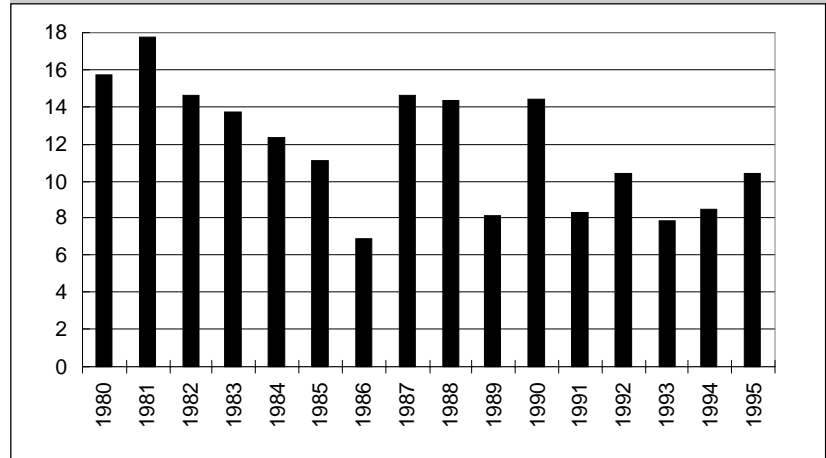
Vaccine-preventable Diseases



Number of new cases reported per 100,000 Leon County residents. Diseases include diphtheria, tetanus, whooping cough, polio, smallpox, Hepatitis B, measles, mumps, rubella, and HIB.

Explanation: Vaccines provide the ability for people to avoid contracting and communicating diseases.

Infant Mortality

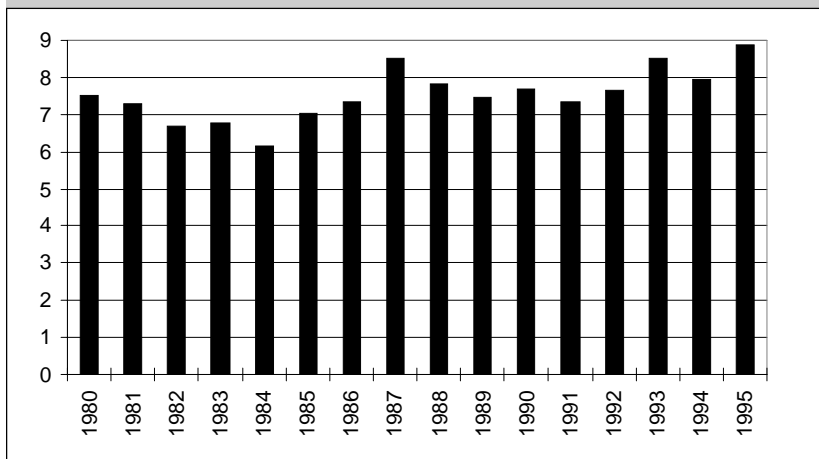


Number of new cases reported per 100,000 Leon County residents

Explanation: Infant mortality is a worldwide health indicator.

Indicators of healthy individuals

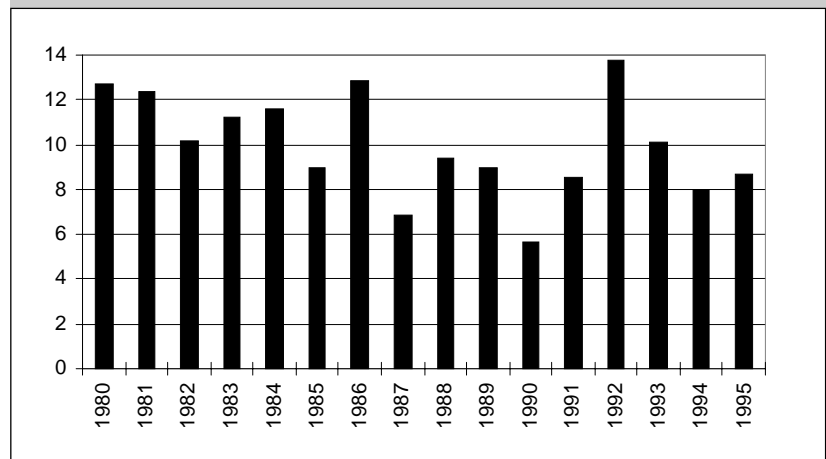
Low Birth Weight Babies



Number of new cases reported per 100,000 Leon County residents

Explanation: Low birth weight babies are more likely than normal weight babies to have health problems, develop disabilities, and die in the first month after birth.

Suicide Rate



Number of new cases reported per 100,000 Leon County residents

Explanation: Suicides indicate that people are having difficulty coping with personal crises, serious health problems, or other life stresses.

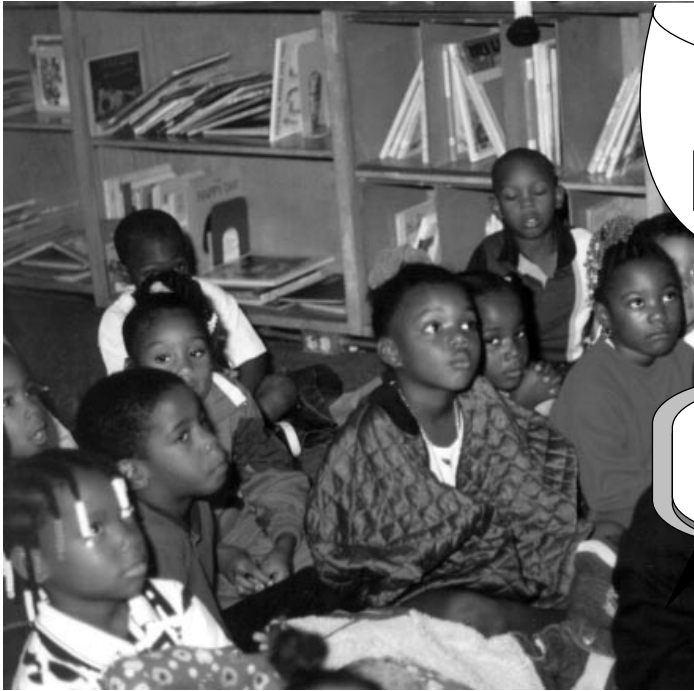
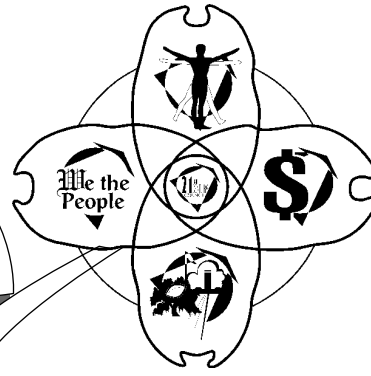


Photo by Leon County Schools

LEARNING



All citizens are literate and have the knowledge and skills required to compete in a global economy and exercise the right and responsibilities of citizenship.

Organizational Goals

- Gainfully employed and financially independent
- Enter and complete graduate, undergraduate, or vocational post-secondary education program

Indicators of Success



Photo by Leon County Schools

Learners at all levels discover their strengths and apply their special skills to life.

LEARNER SKILLS

1. Apply information to perform tasks & to enjoy life
2. Communicate effectively
3. Understand and apply mathematics
4. Think creatively and know how he/she learns
5. Display responsibility, self-esteem, and integrity
6. Manage time, money, materials, and resources
7. Integrate knowledge and understanding
8. Work cooperatively to complete projects
9. Learn from each other to achieve goals
10. Appreciate their own and diverse cultures

LEARNER OUTCOMES

1. Self manager
2. Capable worker
3. Active facilitator
4. Innovative producer
5. Effective communicator
6. Adaptable problem solver
7. Responsible collaborator

Individual Success

Love of Learning

Graduation from learning institutions
Use of library

Attendance at museums, art galleries, & performing arts
Attendance at workshops and special courses

Healthy Self-Esteem

Ability to set a goal and know when it is achieved
Drug free

Does not discriminate on the basis of sex, race, or gender

Physically Fit

Works out on regular basis

Allows time for personal self reflection

Adaptability

Gathers data to make decisions

Willingness to take risks

Community

Votes on a regular basis

Consciousness

Community volunteer

Environmentally sensitive

Indicators of Success

Means to achieve goals

Safe Learning Environment

- Real world experiences
- Faculty and students:
 - Know and listen to each other
 - Trust each other
 - Treat each other with dignity
 - Feel physically safe

Empowered Teachers

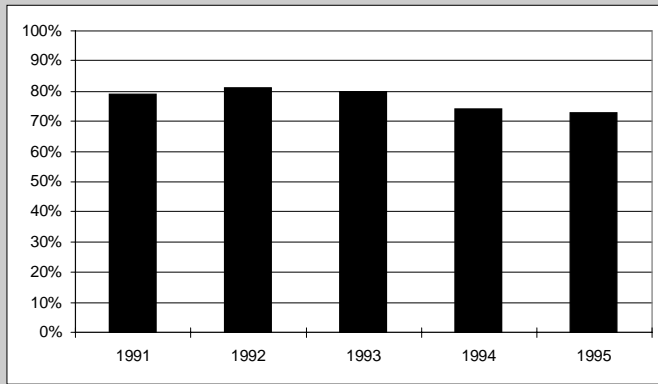
- Professional work environment
- Adequately prepared to work with the learners of tomorrow

Community Resources

- Volunteers
- Mentors
- Libraries
- Museums and art galleries
- Recreational opportunities
- Universities

Indicators of a learning community

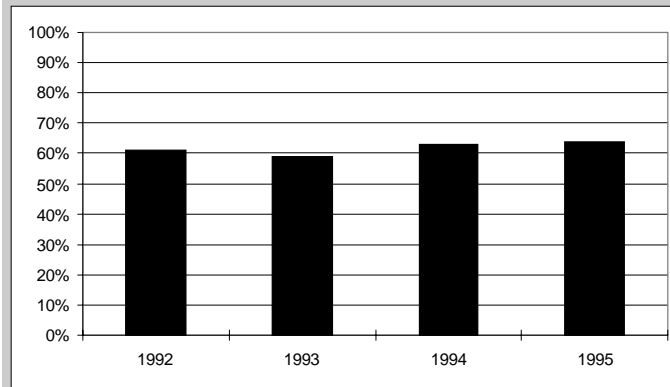
High School Graduation Rate



The number of high school and GED graduates divided by the number of entering ninth graders minus ninth grade retentions three years earlier. Includes all current year graduates, including adult GED and other graduates 19 years and under.

Data Source: Leon County Public Schools, Program Monitoring and Evaluation and Student Assessment.

Readiness for college

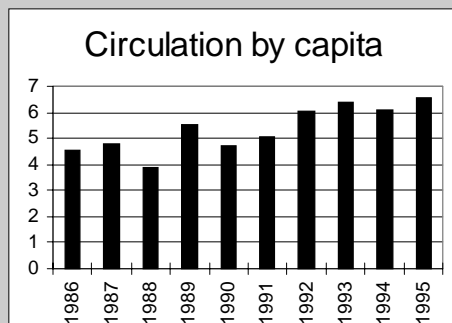
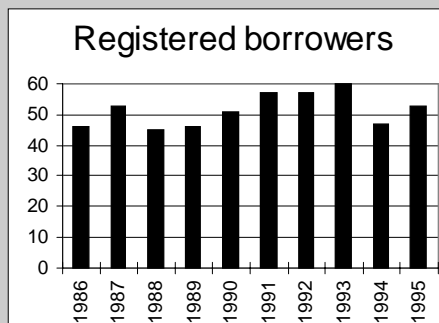


The percentage of public high school graduates who require remediation in one or more subject areas after entering community colleges or state universities.

Explanation: Remediation is costly to students and taxpayers and reflects lack of success in teaching skills in grades K-12.

Data Source: Office of Postsecondary Education Coordination, Florida Department of Education.

Library Membership and Circulation



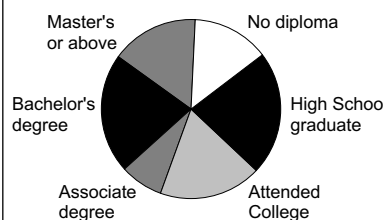
Number of people who have a library card at Leon County Public Libraries.
Average number of books or documents borrowed per cardholder.

Explanation: Library use reflects life long learning.

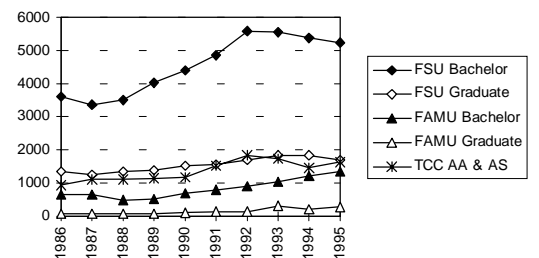
Data Source: Leon County Public Library.

Education of Population

Highest Level Attained



Postsecondary Degrees Awarded



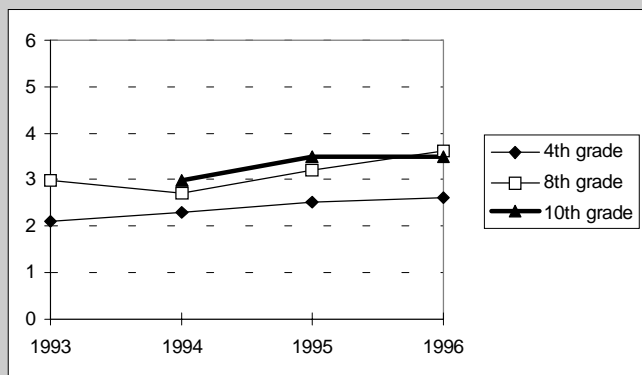
Percentage of Leon County residents age 25 and older whose highest level of educational attainment is shown in categories above. Number of degrees awarded from Florida State University, Florida A&M University and Tallahassee Community College.

Explanation: There is a strong correlation between education level and socioeconomic status. The higher education institutions contribute to the economic stability, cultural environment, intellectual stimulation and advancement of our community.

Data Source: Social and Economic Characteristics: Florida, 1990 Census of Population, U.S. Bureau of the Census. FSU registrar, FAMU registrar, TCC registrar.

Indicators of successful learners

Florida Writes

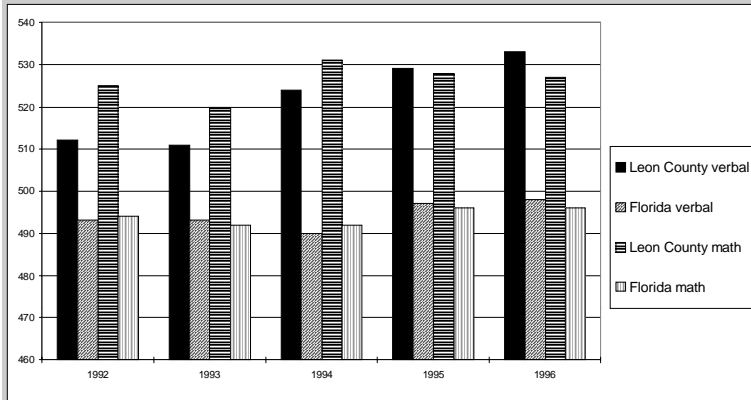


The average score on the Florida Writes Test in grades 4, 8 and 10 of Leon County public schools. Each student must write a response on a randomly assigned topic which is scored on a 1.0 to 6.0 scale (6.0 being the highest).

Explanation: Good writing skills are essential to life. The Florida Writes Test is an excellent indicator of learner skills (writing).

Data Source: Leon County Public Schools, Program Monitoring and Evaluation and Student Assessment.

SAT Scores



Average SAT scores for high school seniors attending public schools in Leon County and Florida. Scores for all years reflect recently revised national norms.

Explanation: SAT scores are indicators of success in college, but are not necessarily indicators of life long achievement.

Data Source: Leon County Public Schools, Program Monitoring and Evaluation and Student Assessment.

WELCOME TO TALLAHASSEE/LEON COUNTY

A Sustainable Learning Community



The sign above greets you when you enter Tallahassee/Leon County from any direction.

The year is 2016 and to the casual observer, Tallahassee/Leon County looks much the way it did fifty years ago. The state Capitol is still a focal point. We still celebrate Spring in Tallahassee, recognizing our diverse living history and lush natural setting, and people are still warm and friendly. Those who live here though know we are a thriving learning community. In this 21st century, people keep the values and stability that have sustained them as a community for over 100 years. At the same time we have a knowledgeable and progressive population.

Today is March 11, 2016. The legislature is in session and the town is bustling with the seasonal influx of new people and visitors. People are on their way to work or school. The flexible school/work day accommodates the needs of family, but all members are expected to complete their school-or job-related tasks. Richard has nothing pressing at the office so he is working at home via his home communication system. Ty



lives close to school so he is using the new bike paths to get there. Joan is using the intermodal transportation system- one integrated for commuting students and workers. Creative transportation options and flexible scheduling have cut travel time to less than 30 minutes, regardless of where one lives.

While violent crime is not

completely an event of the past, it is safe to walk in the neighborhoods of Tallahassee/Leon County. Guided by a living, comprehensive land-use plan, architects, engineers, and city planners combined resources to make this governmental center an accessible, educational and beautiful place. Our neighborhoods and streets bear witness to our love of nature. Tree-lined streets, sidewalks, parks, flower gardens and clean air inspire exercise and neighborliness.

Our day, education, and health care services are available to all and accommodate the community's needs. Care centers are close to the work place and flexible work schedules allow families to help each other. Children are valued as the source of our future.

Learning centers placed strategically around the community offer something for everyone: a preschool, a health clinic, a K-12 school, post-secondary options, a senior citizens' center and some small businesses. They each have a shared library, auditorium and eating facilities- a place where the community can meet and learn together in close proximity to their home or work.

Garbage collection as it was in 1996 is a thing of the past. We recycle almost everything. Only clean, natural fuels are used to run our transportation and businesses.

Recreation and learning options are on-line or hands-on. Computer networks offer unlimited sources of knowledge and idea sharing. For those who yearn for more than digitized images, muse-

ums abound. There is something for everyone, whether it be great art, science or the great outdoors. Since life-long sports are encouraged, athletic events keep our learning center and park facilities in constant use. We even have several Olympic contenders in the areas of gymnastics, track and basketball.



Taxes are low, but the quality of life is higher than ever. The cost of basic governmental services has fallen dramatically -due to increased volunteerism and community cohesiveness- without sacrificing quality and reliability. Government has become a policy making body at all levels; the way policies are carried out lies in the hands of the citizens. Our government leaders have learned to work together through perhaps not always quietly. They now know teamwork can be messy and chaotic. We citizens see these risk-taking discussions as a learning activity and are tolerant when things do not work as expected. More importantly, we elect people we trust who are committed to our values and beliefs. The democratic process is our ally: we hold ourselves and our elective officials responsible for making it work.

Tallahassee/Leon County maintains its low unemployment rate of 3.4%. Slow, steady population growth of 4% per year is matched by a like-numbered, solid, continuous growth in jobs. State government and the education systems remain the largest employers, but the most dra-

continued . . .

HOW WE GOT THERE

This learning community of tomorrow happened by design. Tallahassee/Leon County has always been a caring, involved government and educational center. It has a rich tradition of valuing the past, protecting its green space and wanting the best for our citizens and particularly our children. However, it was not until 1996 that this community began their journey to make Tallahassee/Leon County a learning community based on a "common" vision. That initial vision said "*As a community of equals which values the dignity and worth of all people, we seek to cooperatively create a Tallahassee/Leon County community where:*

- *we will be responsible, self-sufficient, caring and contributing citizens;*
- *we will be happy and live in good physical and mental health;*
- *we will develop and sustain a fiscally sound and stable economy;*
- *we will live and work in a safe, healthful, clean and crime free environment,*
- *our urban landscape, neighborhoods and natural areas enhance our quality of life*
- *and each government agency will be organized and funded to the extent that it meets its objectives and contributes to the common good."*

It was a lofty and naive statement that started our community on this journey of discovery that has been exhilarating, frustrating, and frequently painful but never boring.

Several things happened in 1996 that brought Tallahassee/Leon County to this point.

- The 21st Century Council came together and helped create a collective vision for the community that addressed the multiple need of a changing world. It gathered data to measure the indicators as a starting place for our journey to the future.
- The **Tallahassee Democrat** and the **Public Agenda** had a series of forums that focused on the strengths and weaknesses of the community and brought awareness of "community" to a new level.
- The educational community came to the realization that it truly takes "a community to raise a child" and began to work collaboratively with the community in a holistic way."
- The Quality Movement within local and state governments created opportunities to do things a better way.
- Neighborhood associations saw opportunities for community development, businesses and the Chamber of Commerce were major players..
- Sector planning committees began work identifying the kind of neighborhoods we *wanted* to live in.

Collaboration, not competition, was the underlying

continued . . .

matic growth has occurred in the scientific community. Dozens of high-tech scientific laboratories surround the National High Magnetic Field Laboratory, technology utilizing this world class facility to its fullest potential. Tallahassee Community College, Florida State University and Florida A & M University have become leaders in distance learning such that 50% of their student tele-communicate to campus.

Tallahassee has become a popular convention site as well. Associations now hold their annual spring meetings in Tallahassee/Leon County, taking advantage of the legislative arena in our capital city. Golf, sailing, canoeing, and biking are added to good restaurants as additional amenities. Conferences and seminars take advantage of the many professional and educational resources.



Business still provides a cornerstone of our community delivering the values and quality expected by the community. Grocery stores are accessible, well stocked, and equipped with communication systems. Customers who are busy or sick can order groceries via computer and either pick them up on their way home or pay for home delivery. Other businesses have made similar accommodations. Industry considers Tallahassee/Leon County a prime location. Their partnership agreements with Tallahassee/Leon County include job training for initial employment needs and for rapid advancement, on-site day care and accessible health care for all their employees. These industries also contribute to Tallahassee/Leon County's clean, healthy physical environment.

Tallahassee/Leon County does not live in isolation. We learned early that the creation of a learning community was a global commitment. Our air and water quality, were perfect examples of "we cannot do it alone." We keep in touch with other communities through technology in ways not even dreamed about back in 1995. We visit physically and often via communication technology with other communities around the world. "Think globally, act locally" is a reality.

Tallahassee/Leon County lives up to its reputation. Our children are enthusiastic learners, our citizens are engaged in productive work, and we live in a healthy and safe world.



HOW WE GOT THERE

way of work. Time and space were treated as special gifts. A shortage of money from the state and federal level also convinced us we had to make our own future. We were on our way to creating a sustainable community for our children and grandchildren.

In 1996 we began creating our Tallahassee/Leon County story. We build on the vision, beliefs and values that had made us a good community in the past and... we began to dream our future. We made sure there was agreement and consistency with the vision, beliefs and values. We talked to people about their personal vision for themselves.

Once this story of the future was started, we shared it with students, businesses, educational environments, governments and the community at large. We wrote songs, created mind maps and stories, and lectured. Then we asked everyone to do the same. This story, honoring the learning styles of many cultures, served to unite our diverse Tallahassee/Leon County population.

Then we set goals and gathered data- what do we want and what is it like today. We changed only those things that made our community better. We wanted to preserve the unique characteristics of Tallahassee/Leon County without creating a community of conformists. Soon we could walk in any business or learning environment and join in spirited discussions on how to make Tallahassee/Leon County treasured and valued.

At first this process was very painful because it is hard to give up things that are comfortable, and yet we often argue over strategies and not the outcomes. Gradually there was agreement on the outcomes. With clear outcomes we found the appropriate strategies.

We were on our journey to a new future.

PARTNERSHIP FORM

The 21st Century Council, Inc. is a non-profit, non-partisan organization dedicated to improving the quality of life in Tallahassee/Leon County. Its goal is to transform the vision into reality through participation by the community.

- \$25.00
- \$ 50.00
- \$100.00
- \$250.00
- \$500.00
- In kind contribution or volunteer time



Name _____

Address _____

City, State, Zip _____

Telephone _____

Fax _____

E-mail _____

Be a Partner in our Future

Return to:
 21st Century Council
 918 Railroad Avenue
 Tallahassee, Florida 32310
 222-4684

Thomas & Appraisal
Real Estate

Ann E. Thomas Ted Thomas Realtor
 State Certified Residential 422-2500
 Appraiser/Broker REA 000936

We do it all!
 Appraisals, Sales, Residential, Commercial, Acreage



CAPITAL EYE CENTER
CAPITAL EYE SURGERY CENTER

*A tradition of excellence...
 with an eye to the future.*

The Leader
TALLAHASSEE
FORD

243 N. Magnolia Drive 2417 W. Tennessee St.
 877-1171 575-4575

**Special thanks to our
 corporate sponsors**

NORWEST MORTGAGE

We Want To Be Your Partners In Success!
 1495 Market Street Tallahassee, FL 32312
 906-0022 FAX 906-0033

The Nation's Largest Retail Lender

Teach America

*Transforming Information into
 Communication*

236 East Sixth Ave. 222-6740

Please tell us what you think about this document

	Excellent	Good	Fair	Poor
Ideal Vision	<input type="radio"/>	<input type="radio"/>	<input type="radio"/>	<input type="radio"/>
Indicators	<input type="radio"/>	<input type="radio"/>	<input type="radio"/>	<input type="radio"/>
Vision Map	<input type="radio"/>	<input type="radio"/>	<input type="radio"/>	<input type="radio"/>
Story	<input type="radio"/>	<input type="radio"/>	<input type="radio"/>	<input type="radio"/>
Graphics	<input type="radio"/>	<input type="radio"/>	<input type="radio"/>	<input type="radio"/>
Overall Report	<input type="radio"/>	<input type="radio"/>	<input type="radio"/>	<input type="radio"/>

This report is intended to be a *starting* place for discussion, dialogue, disagreement, and of course, words of praise which will be gratefully accepted. The Tallahassee/Leon County story must be written by the people who live here.

- I would like to help prepare a future Quality of Life Report.
- I would like to help write this community's "story."
- I would like to help implement strategies toward an ideal vision.

Comments:
