



Quality of Life Report

Tallahassee-Leon County, FL

DEMOGRAPHICS

Tallahassee-Leon County Florida



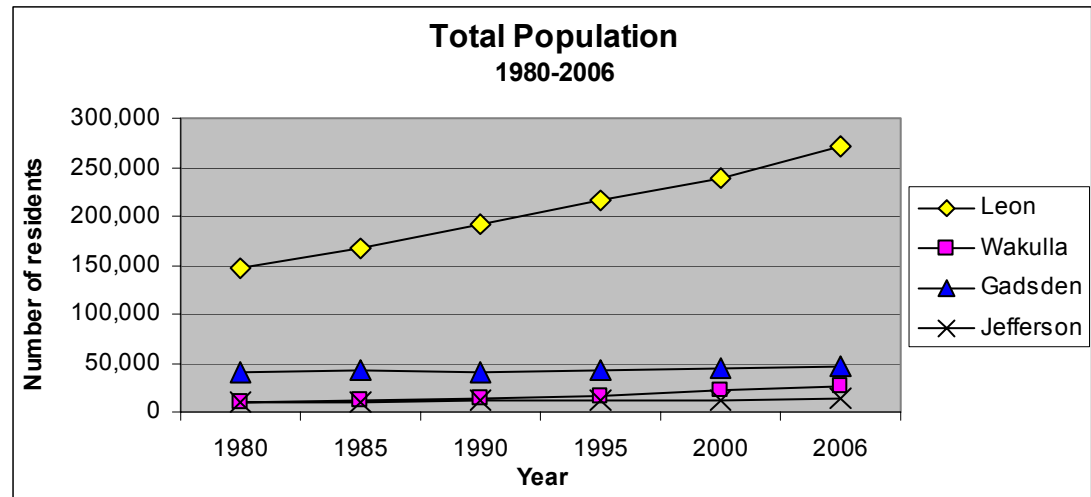
DEMOGRAPHICS
Indicator 1: Total Population

Updated
 04/10/06

Indicator:
 Total number of residents.

Analysis:
 From 1980 to 2006, Leon County’s population increased by 86% - about the same percentage growth as the state as whole. Since 1980, Leon County’s population has grown an average of nearly 4,800 people per year.

Leon County has by far, the largest population in the 4-county region – but is not the fastest growing. Wakulla County’s population, although significantly smaller, was the fastest growing from 1980 to 2006 (and one of the fastest growing in the U.S.).



Data source:
 Office of Economic and Demographic Research, The Florida Legislature
 (Decennial U.S. Census data and population estimates prepared by the University of Florida)

Website:
<http://www.state.fl.us/edr/population.htm>

	1980	1985	1990	1995	2000	2006	% change 1980 to 2006*
Leon	145,981	166,421	192,493	217,185	239,452	271,900	+86%
Wakulla	10,719	12,352	14,202	17,207	22,863	27,421	+156%
Gadsden	41,324	41,975	41,116	43,460	45,087	47,662	+15%
Jefferson	10,585	10,919	11,296	12,832	12,902	14,169	+34%
Florida*	9,753,351	11,272,332	12,938,071	14,335,992	15,982,378	18,232,652	+87%

* Not shown in graph



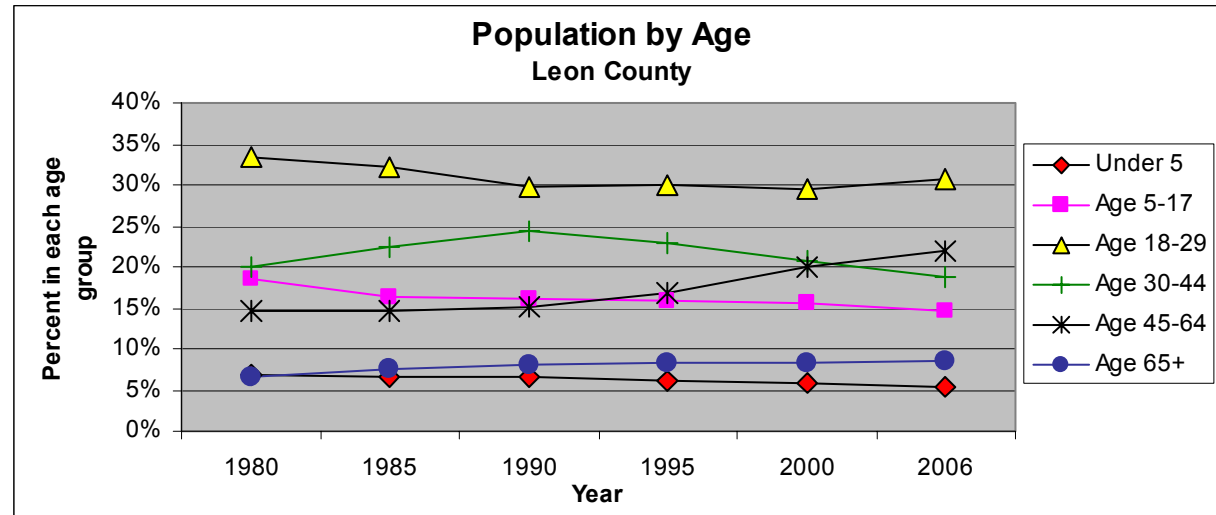
DEMOGRAPHICS

Indicator 2: Population by Age Group

Updated
04/10/06

Indicator:
Percentage of Leon County residents in each age group.

Analysis:
As of 2006, children and young adults (ages 0-29) comprised a smaller proportion of the population than in 1980. College-age residents (18-29), however, remain the county's largest age group with 31% of the overall population. Baby boomers in the 45-64 age group showed the largest increase, up 7.3 percentage points between 1980 and 2006.



	1980	1985	1990	1995	2000	2006	Difference 1980-2006*
Under age 5	7%	7%	7%	6%	6%	5%	-1.5%
Age 5-17	18%	16%	16%	16%	16%	15%	-3.7%
Ages 0-17*	25%	23%	23%	22%	22%	20%	-5.3%
Age 18-29	33%	32%	30%	30%	30%	31%	-2.7%
Age 30-44	20%	22%	24%	23%	21%	19%	-1.1%
Age 45-64	15%	15%	15%	17%	20%	22%	7.3%
Age 65+	7%	7%	8%	8%	8%	9%	1.8%

* Not shown on graph

Data source:
Office of Economic and Demographic Research, The Florida Legislature (Decennial U.S. Census data and population estimates prepared by the University of Florida)

Website:
<http://www.state.fl.us/edr/population.htm>



DEMOGRAPHICS
Indicator 3: Population by Race

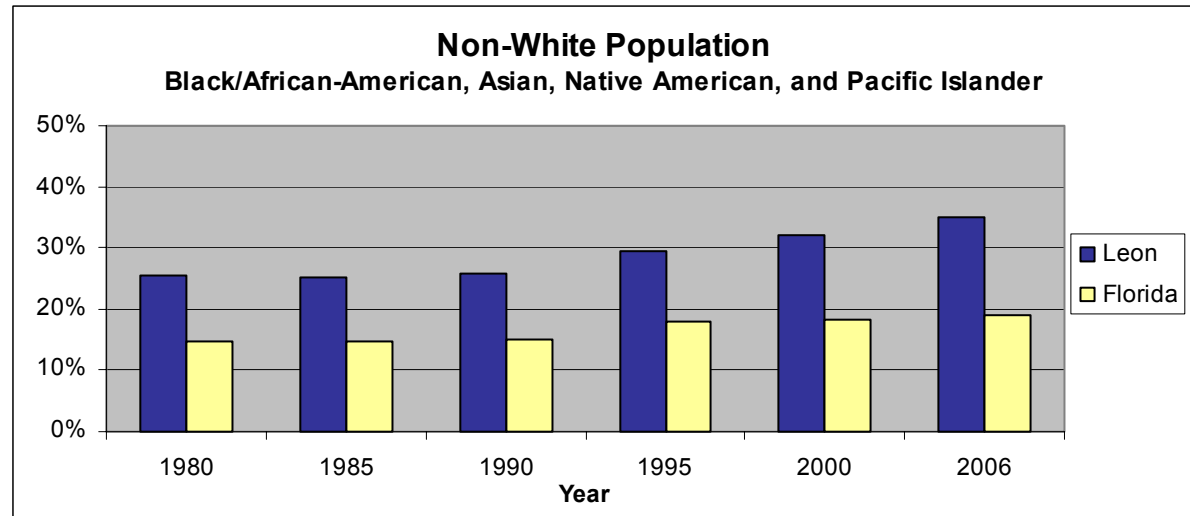
Updated
04/10/06

Indicator:

Percent of residents who are non-White.

Analysis:

Leon County's non-White population is growing and represents a larger percentage of the total population than in the state as a whole. As of 2006, non-Whites (predominantly African-Americans) comprised 35% of Leon County's residents, compared to 19% in Florida.



Data source:

Office of Economic and Demographic Research, The Florida Legislature (Decennial U.S. Census data and population estimates prepared by the University of Florida)

Website:

<http://www.state.fl.us/edr/population.htm>

	1980		1985		1990		1995		2000		2006	
	Non-White	White *	Non-White	White *	Non-White	White *	Non-White	White *	Non-White	White *	Non-White	White *
Leon County	26%	74%	25%	75%	32%	68%	29%	71%	32%	68%	35%	65%
Florida	15%	85%	15%	85%	18%	82%	18%	82%	18%	82%	19%	81%
Difference* (Leon minus Florida)	+11%		+10%		+14%		+11%		+14%		+16%	

*Not shown on graph



DEMOGRAPHICS
Indicator 4: Income distribution

Updated
08/26/06

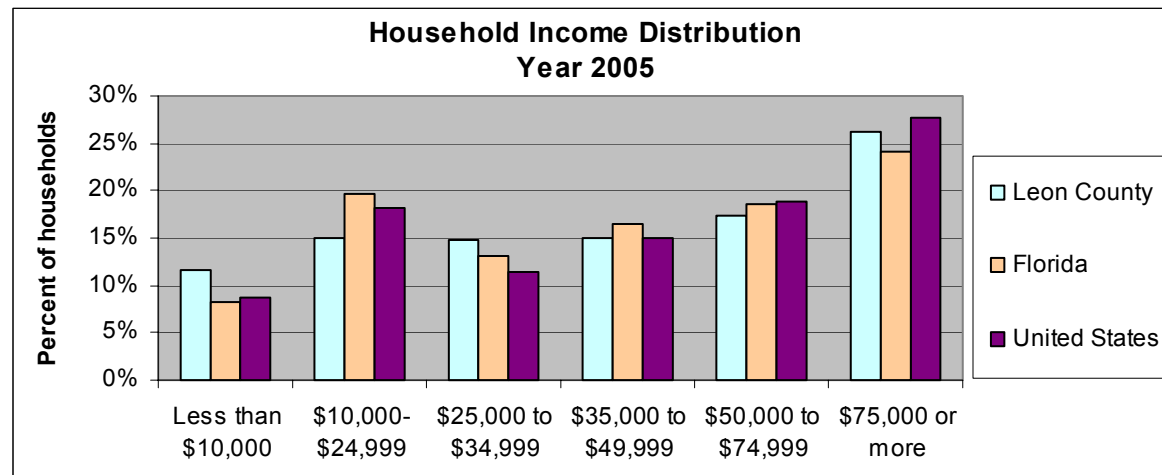
Indicator:
Percent of households at various income levels.

Analysis:
 Compared to Florida and the United States, the Leon County has a significantly larger percentage of households in the lowest income group (less than \$10,000 per year), predominantly due the large student population (see Note).

At the highest income range (\$75,000 or more), Leon County's percentage is lower than the nation but higher than the State.

Data source:
 U.S. Census Bureau, American Community Survey

Website:
<http://www.census.gov/acs/www/>



2005*	Leon County	Florida	United States
Less than \$10,000	11.7%	8.3%	8.7%
\$10,000 to \$24,999	15.1%	19.6%	18.2%
\$25,000 to \$34,999	14.7%	13.1%	11.5%
\$35,000 to \$49,999	15.1%	16.5%	15.1%
\$50,000 to \$74,999	17.3%	18.6%	18.9%
\$75,000 or more	26.1%	24.0%	27.7%

*In 2005 inflation adjusted dollars
 Note: The American Community Survey is limited to household population and excludes the population living in institutions, college dormitories and other group quarters



DEMOGRAPHICS

Indicator 5: Public School Enrollment

Updated
04/08/06

Indicator:

Number of students enrolled in Leon County Public Schools by grade level

Analysis:

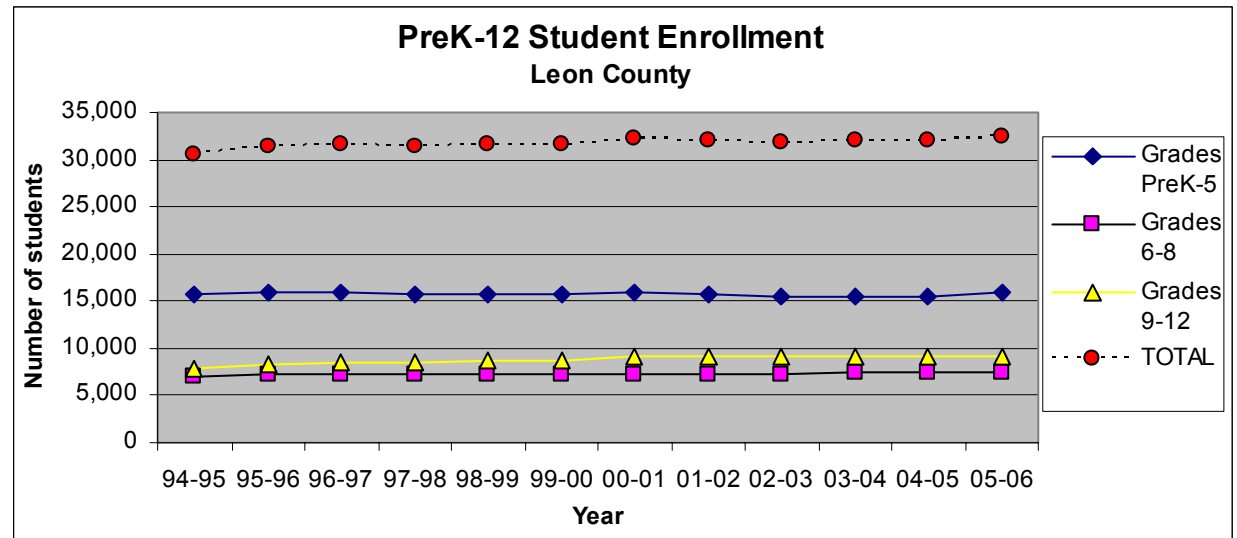
Public school enrollment in Leon County has remained relatively stable over the last seven years, despite an increase in the county's overall population. Middle and high school students (grades 6-12) comprise 51% of student enrollment in Leon County Public Schools. Overall enrollment in 05-06 was up 1.5% compared with 4-05: PreK-5 enrollment as up 2.8% while the slight enrollment decrease in grades 6-8 was offset by a similar increase in grades 9-12 enrollment.

Data source:

Leon County Public Schools
Program Monitoring and Evaluation

Website:

<http://www.tandl.leon.k12.fl.us/programme/databook/>



Grades	1996-97	1997-98	1998-99	1999-00	2000-01	2001-02	2002-03	2003-04	2004-05	2005-06	Change: 96-97 to 05-06
PreK-5	15,851	15,702	15,671	15,713	16,009	15,693	15,445	15,470	15,507	15,948	+97
6-8	7,251	7,150	7,214	7,123	7,155	7,122	7,255	7,393	7,418	7,321	+70
9-12	8,421	8,586	8,754	8,706	9,076	9,137	9,052	9,180	9,080	9,205	+784
TOTAL	31,523	31,438	31,639	31,542	32,240	31,952	31,752	32,043	32,005	32,474	+951



DEMOGRAPHICS

Indicator 6: Minority Public School Enrollment

Updated
04/08/06

Indicator:

Percent of students enrolled in Leon County Public Schools who were minorities (Black and Other).

Analysis:

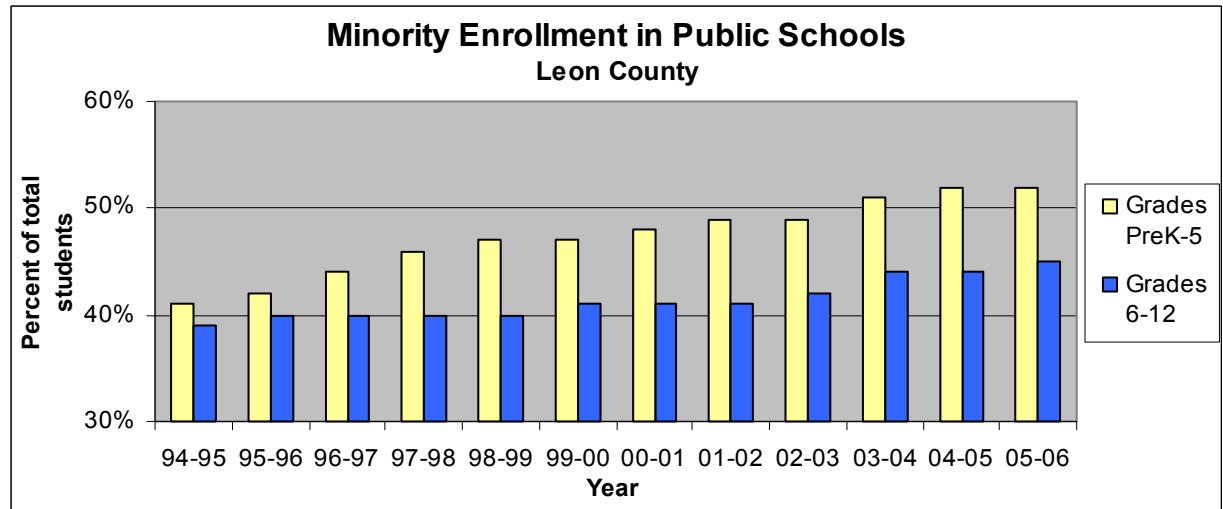
Leon County public schools are serving an increasing percentage of minority students particularly at the elementary level. As of 2005-06, 52% of students in grades PreK-5 were non-White, mainly African American. Although students of "Other" races/Ethnicities comprise a small proportion of total enrollment, this group showed the largest proportional increase from 1995-96 to 2005-06 in both elementary and secondary schools.

Data source:

Leon County Public Schools
Program Monitoring and Evaluation

Website:

<http://www.tandl.leon.k12.fl.us/programme/databook/>



	1996-97	1997-98	1998-99	1999-00	2000-01	2001-02	2002-03	2003-04	2004-05	2005-06	96-97 to 05-06*
Grades PreK-5											
White*	56%	54%	53%	53%	52%	51%	51%	49%	48%	48%	-7.8%
Black	41%	41%	42%	42%	43%	42%	42%	43%	43%	42%	+1.5%
Other	4%	4%	5%	5%	6%	7%	8%	8%	9%	10%	+6.2%
Grades 6-12											
White*	60%	60%	60%	60%	59%	59%	58%	56%	56%	55%	-5.3%
Black	37%	36%	36%	36%	37%	37%	37%	38%	38%	38%	+1.5%
Other	3%	4%	4%	4%	4%	5%	5%	6%	6%	7%	+3.8%

* not shown on graph



DEMOGRAPHICS

Indicator 7: Private School Enrollment

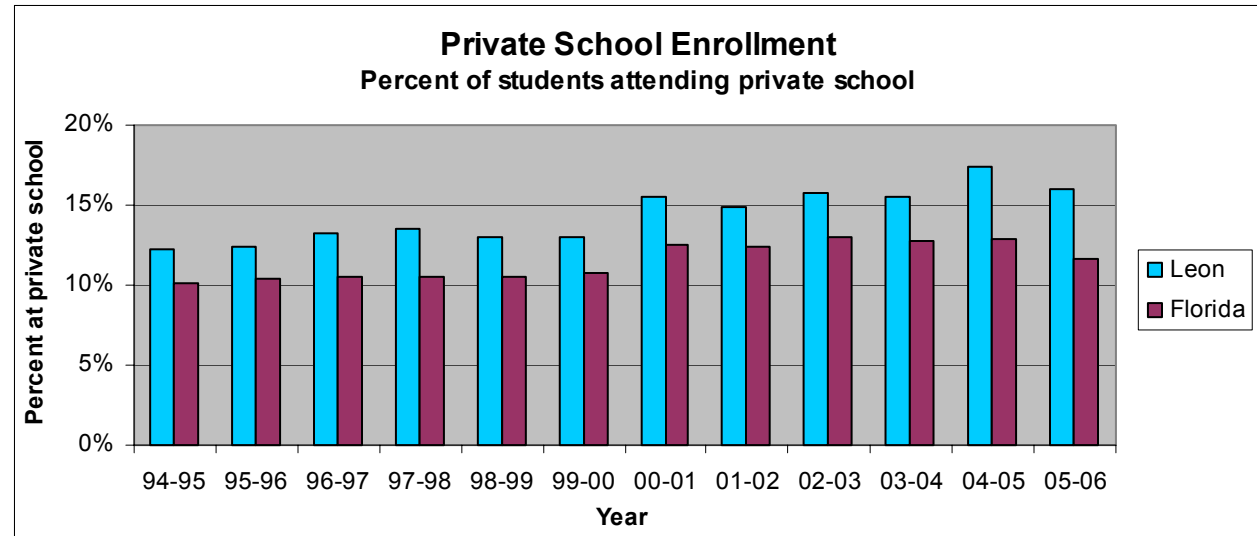
Updated
11/05/06

Indicator:

Percent of elementary, middle and high school students enrolled in private school.

Analysis:

While the vast majority of students in Leon County attend public school, 16% in the 2005-06 school year attend private school – a larger percentage than in the state as a whole. The increase in 2000-01 reflects the inclusion of pre-kindergarten students in the count that year (see note below table).



Data source:

Florida Department of Education
Office of Independent Education &
Parental Choice

Website:

<http://www.floridaschoolchoice.org/>

Private School	1997-98	1998-99	1999-00	2000-01	2001-02	2002-03	2003-04	2004-05	2005-06
Leon - # enrolled*	4,899	4,722	4,726	5,866	5,585	5,983	5,884	6,709	6,146
Leon - % enrolled	13.5%	13.0%	13.0%	15.5%	14.9%	15.8%	15.4%	17.4%	16.0%
Florida - % enrolled	10.6%	10.5%	10.8%	12.5%	12.4%	12.9%	12.8%	12.9%	11.6%

* Not shown on graph

Note: 2000-01 forward includes preK-12; prior years include K-12 only (pre-K excluded).